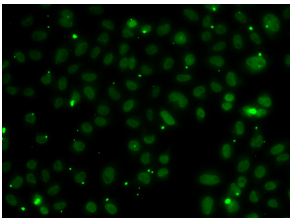


Anti-NSL1 Antibody (A10055)

Specifications:

Name:	Anti-NSL1 Antibody
Description:	Rabbit polyclonal antibody to NSL1.
Applications:	WB, IF
Recommended Dilutions:	WB: 1:500-1:2000, IF: 1:50-1:100
Reactivity:	Human
Immunogen:	Recombinant fusion protein containing a sequence corresponding to amino acids 1-281 of human NSL1 (NP_056286.3).
Sequence:	MAGSPELVVLDPPWDKELAAGTESQALVSATPREDFRVRCCTSKRAVTEMLQLCGRFVQ KLGDALPEEIREPALRDAQWTFESAVQENISINGQAWQEASDNCFMDSDIKVLEDQFD EIIVDIATKRKQYPRKILECVIKTIKAKQEILKQYHPVVHPLDLKYDPDPAPHMENLK CRGETVAKEISEAMKSLPALIEQGEGFSQVLRMQPVIHLQRIHQEVFSSCHRKPDAKP ENFITQIETTPPTETASRKTSDMVLKRKQTKDCPQRKWYPLRPKKNLDT
Host:	Rabbit
Clonality:	Polyclonal
Isotype:	IgG
Conjugate:	Unconjugated
Purification:	Affinity purification.
Formulation:	Supplied in Phosphate Buffered Saline, pH 7.30, with 0.02% Sodium Azide and 50% Glycerol.
Storage:	Shipped at 4°C. Upon delivery aliquot and store at -20°C. Avoid freeze / thaw cycles.
Disclaimer:	This product is for research use only. It is not intended for diagnostic or therapeutic use.

Images:



Immunofluorescence analysis of A549 cells using Anti-NSL1 Antibody (A7089).