

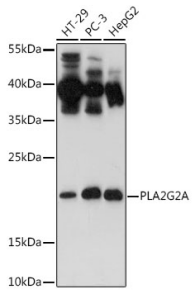
Anti-Secretory phospholipase A2 Antibody (A11428)

Specifications:

Name:	Anti-Secretory phospholipase A2 Antibody
Description:	Rabbit polyclonal antibody to Secretory phospholipase A2.
Applications:	WB
Recommended Dilutions:	WB: 1:100-1:500
Reactivity:	Human, Mouse
Immunogen:	Recombinant fusion protein containing a sequence corresponding to amino acids 21-144 of human PLA2G2A (NP_001155201.1).
Sequence:	NLVNFHRMIKLTTGKEAALSYGFGCHCGVGGRGSPKDATDRCCVTHDCCYKRLEKRG CGTKFLSYKFSNSGSRITCAKQDSCRSQLCECDKAAATCFARNKTTYNKKYQYYSNKH CRGSTPRC
Host:	Rabbit
Clonality:	Polyclonal
Isotype:	IgG
Conjugate:	Unconjugated
Purification:	Affinity purification.
Molecular Weight:	18 kDa
Product Form:	Liquid
Formulation:	Supplied in Phosphate Buffered Saline, pH 7.3, with 50% Glycerol and 0.02% Sodium Azide.
Storage:	Shipped at 4°C. Upon delivery aliquot and store at -20°C. Avoid freeze / thaw cycles.
Disclaimer:	This product is for research use only. It is not intended for diagnostic or therapeutic use.

Anti-Secretory phospholipase A2 Antibody (A11428)

Images:



Western blot analysis of extracts of various cell lines, using Anti-Secretory phospholipase A2 Antibody (A11428) at 1:500 dilution. The secondary antibody was Goat Anti-Rabbit IgG H&L Antibody (HRP) at 1:10,000 dilution. Lysates/proteins were present at 25 μ g per lane. The blocking buffer used was 3% non-fat dry milk in TBST. Detection was with a ECL Basic Kit. Exposure time: 90s.