

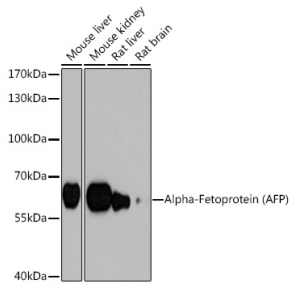
## Anti-alpha 1 Fetoprotein Antibody (A12534)

### Specifications:

|                        |  |
|------------------------|--|
| Name:                  | Anti-alpha 1 Fetoprotein Antibody  |
| Description:           | Rabbit polyclonal antibody to alpha 1 Fetoprotein.   |
| Applications:          | WB   |
| Recommended Dilutions: | WB: 1:500-1:2,000  |
| Reactivity:            | Human, Mouse, Rat  |
| Immunogen:             | Recombinant fusion protein containing a sequence corresponding to amino acids 360-609 of human Alpha-Fetoprotein (Alpha-Fetoprotein (AFP)) (NP_001125.1).  |
| Sequence:              | RRHPQLAVSVILRVAKGYQELLEKCFQTENPLECQDKGEEELQKYIQESQALAKRSCG<br>LFQKLGEYYLQNAFLVAYTKKAPQLTSSSELMATRMAATAATCCQLSEDKLLACGEG<br>AADIIIGHLCIRHEMTPVNPVGVGQCCTSSYANRRPCFSSLVDETYVPPAFSDDKFIF<br>HKDLCQAQGVVALQTMKQEFLINLVKQKPQITEEQLEAVIADFSGLLEKCCQGQEQEVC<br>FAEEGQKLISKTRAALGV |
| Host:                  | Rabbit   |
| Clonality:             | Polyclonal   |
| Isotype:               | IgG  |
| Conjugate:             | Unconjugated   |
| Purification:          | Affinity purification.   |
| Molecular Weight:      | 68 kDa   |
| Product Form:          | Liquid   |
| Formulation:           | Supplied in Phosphate Buffered Saline, pH 7.3, with 50% Glycerol and 0.02% Sodium Azide.   |
| Storage:               | Shipped at 4°C. Upon delivery aliquot and store at -20°C. Avoid freeze / thaw cycles.  |
| Disclaimer:            | This product is for research use only. It is not intended for diagnostic or therapeutic use.   |

## Anti-alpha 1 Fetoprotein Antibody (A12534)

### Images:



Western blot analysis of extracts of various cell lines, using Anti-alpha 1 Fetoprotein Antibody (A12534) at 1:1,000 dilution. The secondary antibody was Goat Anti-Rabbit IgG H&L Antibody (HRP) at 1:10,000 dilution. Lysates/proteins were present at 25 $\mu$ g per lane. The blocking buffer used was 3% non-fat dry milk in TBST. Detection was with a ECL Basic Kit. Exposure time: 40s.