

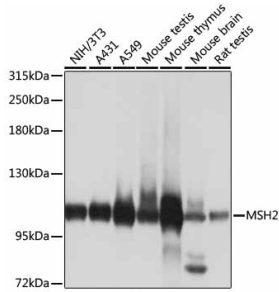
## Anti-MSH2 Antibody (A13256)

### Specifications:

Name:	Anti-MSH2 Antibody
Description:	Rabbit polyclonal antibody to MSH2.
Applications:	WB, IP
Recommended Dilutions:	WB: 1:500-1:2000, IP: 1:20-1:50
Reactivity:	Human, Mouse, Rat
Immunogen:	Recombinant fusion protein containing a sequence corresponding to amino acids 1-300 of human MSH2 (NP_000242.1).
Sequence:	MAVQPKETLQLESAAEVGFVRRFFQGMPEKPTTTVRLFDRGDFYTAHGEDALLAAREVF KTQGVIKYMGPAKAKNLQSVVLSKMNFEFVKDLLLVRQYRVEVYKNRAGNKASKEND WYLAYKASPGNLSQFEDILFGNNDMSASIGVVGVKMSAVDGGQRQVGVGYVDSIQRKLG LCEFPDNDQFSNLEALLIQIGPKECVLPGGETAGDMGKLRQIIQRGGILITERKKADF STKDIYQDLNRLKGGKGEQMNSAVLPEMENQVAVSSLSAVIKFLELLSDDSNFGQFE LTTDFDSQYM
Host:	Rabbit
Clonality:	Polyclonal
Isotype:	IgG
Conjugate:	Unconjugated
Purification:	Affinity purification.
Molecular Weight:	105kDa
Formulation:	Supplied in Phosphate Buffered Saline, pH 7.30, with 0.02% Sodium Azide and 50% Glycerol.
Storage:	Shipped at 4°C. Upon delivery aliquot and store at -20°C. Avoid freeze / thaw cycles.
Disclaimer:	This product is for research use only. It is not intended for diagnostic or therapeutic use.

## Anti-MSH2 Antibody (A13256)

### Images:



Western blot analysis of extracts of various cell lines, using Anti-MSH2 Antibody (A1121) at 1:1,000 dilution.

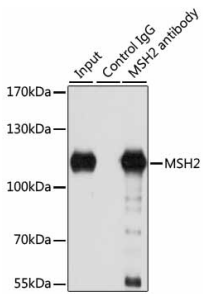
Secondary antibody: Goat Anti-Rabbit IgG (H+L) (HRP) (AS014) at 1:10,000 dilution.

Lysates / proteins: 25µg per lane.

Blocking buffer: 3% non-fat dry milk in TBST.

Detection: ECL Basic Kit (RM00020).

Exposure time: 10s.



Immunoprecipitation analysis of 150µg extracts of A549 cells using 3µg Anti-MSH2 Antibody (A1121). Western blot was performed from the immunoprecipitate using Anti-MSH2 Antibody (A1121) at a dilution of 1:1000.