

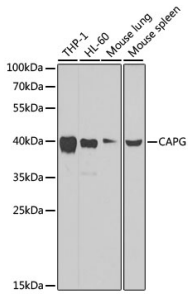
Anti-Actin Regulatory Protein CAPG / MCP Antibody (A15644)

Specifications:

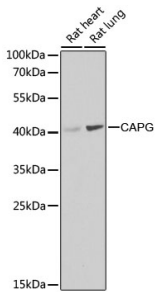
Name:	Anti-Actin Regulatory Protein CAPG / MCP Antibody
Description:	Rabbit polyclonal antibody to Actin Regulatory Protein CAPG / MCP.
Applications:	WB, IHC
Recommended Dilutions:	WB: 1:500-1:2,000, IHC: 1:50-1:200
Reactivity:	Human, Mouse, Rat
Immunogen:	Recombinant fusion protein containing a sequence corresponding to amino acids 1-348 of human CAPG (NP_001738.2).
Sequence:	MYTAIPQSGSPFPGSVQDPGLHVWRVEKLPVPVAQENQGVFFSGDSYLVLHNGPEEV SHLHLWIGQQSSRDEQGACAVLAVHLNLTLLGERPVQHREVQGNESDLFMSYFPRGLKY QEGGVESAFHKTSTGAPAAIKKLYQVKGKKNIRATERALNWDSFNTGDCFILDLGQNI FAWCGGKSNILERNKARDLALAIRDSERQQKAQVEIVTDGEEPAEMIQVLGPKPALKE GNPEEDLTADKANAQAAALYKVSDATGQMNLTKVADSSPFALELLISDDCFVLDNGLC GKIYIWKGRKANERQAALQVAEGFISRMQYAPNTQVEILPQGHESPIFKQFFKDWK
Host:	Rabbit
Clonality:	Polyclonal
Isotype:	IgG
Conjugate:	Unconjugated
Purification:	Affinity purification.
Molecular Weight:	38 kDa
Product Form:	Liquid
Formulation:	Supplied in Phosphate Buffered Saline, pH 7.3, with 50% Glycerol and 0.02% Sodium Azide.
Storage:	Shipped at 4°C. Upon delivery aliquot and store at -20°C. Avoid freeze / thaw cycles.
Disclaimer:	This product is for research use only. It is not intended for diagnostic or therapeutic use.

Anti-Actin Regulatory Protein CAPG / MCP Antibody (A15644)

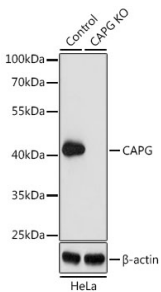
Images:



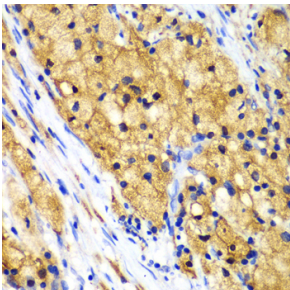
Western blot analysis of extracts of various cell lines, using Anti-Actin Regulatory Protein CAPG / MCP Antibody (A15644) at 1:1,000 dilution. The secondary antibody was Goat Anti-Rabbit IgG H&L Antibody (HRP) at 1:10,000 dilution. Lysates/proteins were present at 25µg per lane. The blocking buffer used was 3% non-fat dry milk in TBST. Detection was with a ECL Basic Kit. Exposure time: 30s.



Western blot analysis of extracts of various cell lines, using Anti-Actin Regulatory Protein CAPG / MCP Antibody (A15644) at 1:1,000 dilution. The secondary antibody was Goat Anti-Rabbit IgG H&L Antibody (HRP) at 1:10,000 dilution. Lysates/proteins were present at 25µg per lane. The blocking buffer used was 3% non-fat dry milk in TBST. Detection was with a ECL Basic Kit. Exposure time: 90s.



Western blot analysis of extracts from normal (control) and CAPG knockout (KO) HeLa cells, using Anti-Actin Regulatory Protein CAPG / MCP Antibody (A15644) at 1:1,000 dilution. The secondary antibody was Goat Anti-Rabbit IgG H&L Antibody (HRP) at 1:10,000 dilution. Lysates/proteins were present at 25µg per lane. The blocking buffer used was 3% non-fat dry milk in TBST. Detection was with a ECL Basic Kit. Exposure time: 90s.



Immunohistochemistry analysis of paraffin-embedded human lung cancer using Anti-Actin Regulatory Protein CAPG / MCP Antibody (A15644) at a dilution of 1:100 (40x lens).