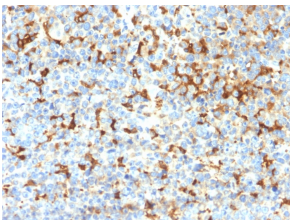


Anti-TRP1 Antibody [TYRP1/2340R] (A250259)

Specifications:

Name:	Anti-TRP1 Antibody [TYRP1/2340R]
Description:	Recombinant rabbit monoclonal [TYRP1/2340R] antibody to TRP1.
Applications:	ELISA, IHC-P
Recommended Dilutions:	IHC-P: 1-2 µg/ml
Reactivity:	Human
Immunogen:	Recombinant fragment, within amino acids 257-377, of human TYRP1 protein. The exact sequence is proprietary.
Host:	Rabbit
Clonality:	Monoclonal
Clone ID:	TYRP1/2340R
Isotype:	IgG
Conjugate:	Unconjugated
Purification:	Protein A/G chromatography.
Concentration:	200 µg/ml
Product Form:	Liquid
Formulation:	Supplied in 10mM Phosphate Buffered Saline with 0.05% BSA and 0.05% Sodium Azide.
Storage:	Shipped at 4°C. Upon delivery aliquot and store at -20°C. Avoid freeze / thaw cycles.
General Notes:	This monoclonal antibody is also available in a different formulation without BSA and Sodium Azide - Anti-TRP1 Antibody [TYRP1/2340R] - BSA and Azide free (A253439).
Disclaimer:	This product is for research use only. It is not intended for diagnostic or therapeutic use.

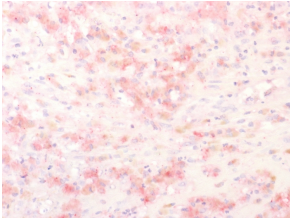
Images:



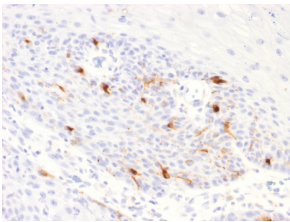
Immunohistochemical analysis of formalin-fixed, paraffin-embedded human melanoma using Anti-TRP1 Antibody [TYRP1/2340R].

Anti-TRP1 Antibody [TYRP1/2340R] (A250259)

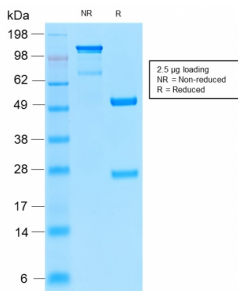
Images continued:



Immunohistochemical analysis of formalin-fixed, paraffin-embedded human melanoma using Anti-TRP1 Antibody [TYRP1/2340R].



Immunohistochemical analysis of formalin-fixed, paraffin-embedded human basal cell carcinoma using Anti-TRP1 Antibody [TYRP1/2340R].



SDS-PAGE analysis of Anti-TRP1 Antibody [TYRP1/2340R] under non-reduced and reduced conditions; showing intact IgG and intact heavy and light chains, respectively. SDS-PAGE analysis confirms the integrity and purity of the antibody.