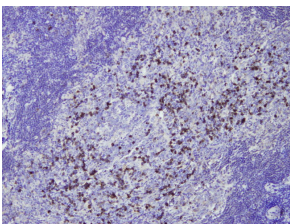


Anti-IgG Antibody [E20-V] (A8242)

Specifications:

Name:	Anti-IgG Antibody [E20-V]
Description:	Rabbit monoclonal (E20-V) antibody to IgG.
Specificity:	This antibody recognizes the epitope between Val167 - Val185.
Applications:	IHC-P, IHC-Fr
Recommended Dilutions:	IHC: 1:100-1:300.
Reactivity:	Human
Immunogen:	Peptide derived from internal domain of human IgG-1 chain C region.
Host:	Rabbit
Clonality:	Monoclonal
Clone ID:	E20-V
Isotype:	IgG
Conjugate:	Unconjugated
Product Form:	Liquid
Formulation:	Supplied in Tris Buffered Saline, pH 8.0, with 20 mg/ml BSA and 0.05% Sodium Azide.
Storage:	Store at 4°C.
Disclaimer:	This product is for research use only. It is not intended for diagnostic or therapeutic use.

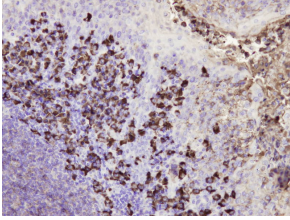
Images:



IgG positive plasma cells in the case of IgG4-related chronic sclerosing sialoadenitis. Formalin fixed, paraffin embedded human tissues (4 μ m sections) stained with Anti-Human IgG Antibody (A8242).

Anti-IgG Antibody [E20-V] (A8242)

Images continued:



IgG expression in plasma cells in tonsillar tissue. Formalin fixed, paraffin embedded human tissues (4 μ m sections) stained with Anti-Human IgG Antibody (A8242).