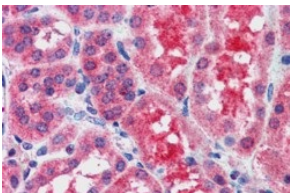


Anti-SOCS1 Antibody (A83759)

Specifications:

Name:	Anti-SOCS1 Antibody
Description:	Goat polyclonal antibody to SOCS1.
Applications:	ELISA, WB
Reactivity:	Mouse, Human
Immunogen:	Synthetic peptide corresponding to Human SOCS1 (C terminal).
Sequence:	C-VLRDYLSFPFQI
Host:	Goat
Clonality:	Polyclonal
Isotype:	IgG
Conjugate:	Unconjugated
Purification:	Purified from goat serum by ammonium sulphate precipitation followed by antigen affinity chromatography using the immunizing peptide.
Concentration:	100 µg at 0.5 mg/ml.
Product Form:	Liquid
Formulation:	Supplied in Tris Buffered Saline, pH 7.30, with 0.02% Sodium Azide and 0.5% BSA.
Storage:	Shipped at 4°C. Upon delivery aliquot and store at -20°C. Avoid freeze / thaw cycles.
Disclaimer:	This product is for research use only. It is not intended for diagnostic or therapeutic use.

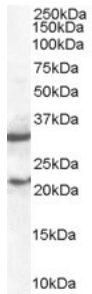
Images:



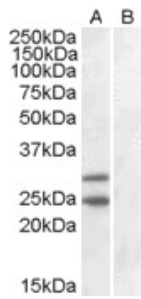
Anti-SOCS1 Antibody (A83759) (2.5µg/ml) staining of paraffin embedded Human Kidney. Steamed antigen retrieval with citrate buffer pH 6, AP-staining.

Anti-SOCS1 Antibody (A83759)

Images continued:



Anti-SOCS1 Antibody (A83759) (2 μ g/ml) staining of Mouse Spleen lysate (RIPA buffer, 35 μ g total protein per lane). Detected by chemiluminescence.



HEK293 overexpressing SOCS1 and probed with Anti-SOCS1 Antibody (A83759) (mock transfection in lane B).