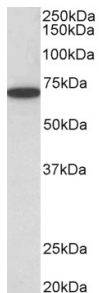


Anti-HDAC1 Antibody (A84192)

Specifications:

Name:	Anti-HDAC1 Antibody
Description:	Goat polyclonal antibody to HDAC1.
Applications:	ELISA, WB, ChIP
Reactivity:	Human, Mouse
Immunogen:	Synthetic peptide corresponding to Human HDAC1 (C terminal).
Sequence:	C-KPEAKGVKKEEVK
Host:	Goat
Clonality:	Polyclonal
Isotype:	IgG
Conjugate:	Unconjugated
Purification:	Purified from goat serum by ammonium sulphate precipitation followed by antigen affinity chromatography using the immunizing peptide.
Concentration:	100 µg at 0.5 mg/ml.
Product Form:	Liquid
Formulation:	Supplied in Tris Buffered Saline, pH 7.30, with 0.02% Sodium Azide and 0.5% BSA.
Storage:	Shipped at 4°C. Upon delivery aliquot and store at -20°C. Avoid freeze / thaw cycles.
Disclaimer:	This product is for research use only. It is not intended for diagnostic or therapeutic use.

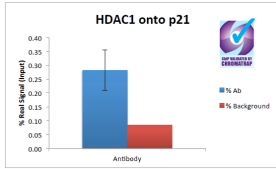
Images:



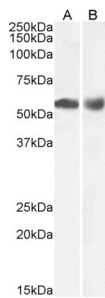
Anti-HDAC1 Antibody (A84192) (0.5 µg/ml) staining of HeLa lysate (35 µg protein in RIPA buffer). Primary incubation was 1 hour. Detected by chemiluminescence.

Anti-HDAC1 Antibody (A84192)

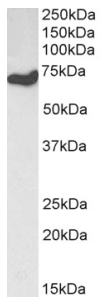
Images continued:



ChIP of 2 μ g Anti-HDAC1 Antibody (A84192) with 1 μ g MCF7 chromatin using the Chromatrap[®] spin column sonication kit (Protein G) measuring H3 enrichment onto the p21 locus.



Anti-HDAC1 Antibody (A84192) (0.1 μ g/ml) staining of Human Duodenum (A) and Lymph Node (B) lysate (35 μ g protein in RIPA buffer). Primary incubation was 1 hour. Detected by chemiluminescence.



Anti-HDAC1 Antibody (A84192) (0.1 μ g/ml) staining of NIH3T3 lysate (35 μ g protein in RIPA buffer). Primary incubation was 1 hour. Detected by chemiluminescence