

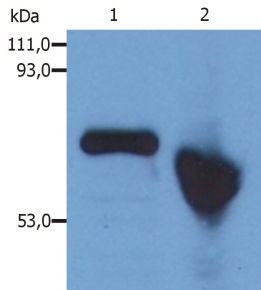
## Anti-alpha Fetoprotein Antibody [AFP-01] (A85533)

### Specifications:

Name:	Anti-alpha Fetoprotein Antibody [AFP-01]
Description:	Mouse monoclonal [AFP-01] antibody to alpha Fetoprotein.
Specificity:	The antibody AFP-01 reacts with human alpha-Fetoprotein (AFP), a 70 kDa oncofetal antigen. AFP is a major fetal plasma protein, but is not present in healthy adult tissues. Elevated AFP concentrations in adult plasma may be an early marker of hepatocellular carcinoma or teratoblastoma, while high concentrations in amniotic fluid may indicate severe congenital defects of a fetus.
Applications:	IP, ELISA, WB
Reactivity:	Human
Immunogen:	Purified alpha Fetoprotein.
Host:	Mouse
Clonality:	Monoclonal
Clone ID:	AFP-01
Isotype:	IgG1
Conjugate:	Unconjugated
Purification:	Purified by precipitation and chromatography.
Concentration:	1 mg/ml
Purity:	> 95% (by SDS-PAGE).
Product Form:	Liquid
Formulation:	Supplied in Phosphate Buffered Saline, pH 7.4, with 15 mM Sodium Azide.
Storage:	Shipped at 4°C. Upon delivery aliquot and store at -20°C. Avoid freeze / thaw cycles.
Disclaimer:	This product is for research use only. It is not intended for diagnostic or therapeutic use.

## Anti-alpha Fetoprotein Antibody [AFP-01] (A85533)

### Images:



Western Blotting analysis of human alpha-Fetoprotein in Hep G2 human hepatocellular carcinoma cell line. Lane 1: Immunostaining with Anti-alpha Fetoprotein Antibody (A85533) (reducing conditions). Lane 2: Immunostaining with Anti-alpha Fetoprotein Antibody (A85533) (non-reducing conditions).