

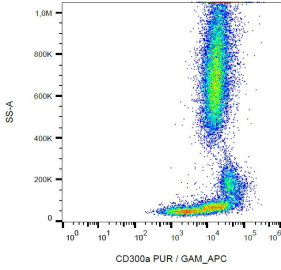
Anti-CD300a Antibody [MEM-260] (A85897)

Specifications:

| | |
|------------------------|-------------------------------------------------------------------------------------------------------------------------------------------------------------------------------------------------------------------------------------------------------------------------|
| Name: | Anti-CD300a Antibody [MEM-260] |
| Description: | Mouse monoclonal [MEM-260] antibody to CD300a. |
| Specificity: | This antibody reacts with an extracellular epitope of CD300a, a 60 kDa leukocyte transmembrane glycoprotein expressed on human granulocytes, monocytes, neutrophils, NK cells, mast cells, dendritic cells, 25% of circulating T cells, and 15% of circulating B cells. |
| Applications: | Flow Cytometry, WB |
| Recommended Dilutions: | Flow Cytometry: 2 µg/ml |
| Reactivity: | Human |
| Immunogen: | HPB human acute lymphoid leukemia cell line. |
| Host: | Mouse |
| Clonality: | Monoclonal |
| Clone ID: | MEM-260 |
| Isotype: | IgG1 |
| Conjugate: | Unconjugated |
| Purification: | Protein A chromatography. |
| Concentration: | 1 mg/ml |
| Purity: | > 95% (by SDS-PAGE). |
| Product Form: | Liquid |
| Formulation: | Supplied in Phosphate Buffered Saline, pH 7.4, with 15 mM Sodium Azide. |
| Storage: | Shipped at 4°C. Upon delivery aliquot and store at -20°C. Avoid freeze / thaw cycles. |
| Disclaimer: | This product is for research use only. It is not intended for diagnostic or therapeutic use. |

Anti-CD300a Antibody [MEM-260] (A85897)

Images:



Surface staining of human peripheral blood cells with Anti-CD300a Antibody (A85897).