

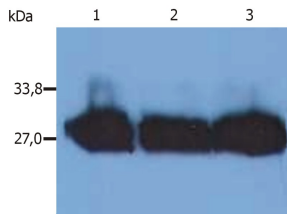
## Anti-Human Kappa Light Chain Antibody [MEM-09] (A85908)

### Specifications:

Name:	Anti-Human Kappa Light Chain Antibody [MEM-09]
Description:	Mouse monoclonal [MEM-09] antibody to Human Kappa Light Chain.
Specificity:	The antibody MEM-09 reacts with both secreted and B cell-surface human immunoglobulin, specifically reacts with kappa light chains (22.5 kDa). Material immunoprecipitated from human serum with the antibody MEM-09 consists of IgG and traces of IgM.
Applications:	Flow Cytometry, IP, WB, IHC-P, ICC, ELISA
Recommended Dilutions:	Flow Cytometry: 5 µg/ml
Reactivity:	Human
Immunogen:	Crude thymus membrane fraction.
Host:	Mouse
Clonality:	Monoclonal
Clone ID:	MEM-09
Isotype:	IgG1
Conjugate:	Unconjugated
Purification:	Protein A chromatography.
Concentration:	1 mg/ml
Purity:	> 95% (by SDS-PAGE).
Product Form:	Liquid
Formulation:	Supplied in Phosphate Buffered Saline, pH 7.4, with 15 mM Sodium Azide.
Storage:	Shipped at 4°C. Upon delivery aliquot and store at -20°C. Avoid freeze / thaw cycles.
Disclaimer:	This product is for research use only. It is not intended for diagnostic or therapeutic use.

## Anti-Human Kappa Light Chain Antibody [MEM-09] (A85908)

Images:



Western Blotting analysis (reducing conditions) of human blood sera using Anti-Kappa Light Chain Antibody (A85908). Lane 1-3: Human blood serum of different healthy donors.