

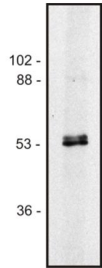
## Anti-alpha Tubulin + beta Tubulin Antibody [TU-10] (A85919)

### Specifications:

Name:	Anti-alpha Tubulin + beta Tubulin Antibody [TU-10]
Description:	Mouse monoclonal [TU-10] antibody to alpha Tubulin + beta Tubulin.
Specificity:	The antibody TU-10 recognizes alpha, beta-tubulin heterodimer, a basic intracellular structural unit of microtubules. Alpha- and beta-tubulins form approximately 100 kDa tubulin heterodimer, a globular protein that polymerizes to form microtubules.
Applications:	WB, ICC
Recommended Dilutions:	WB: 2 µg/ml
Reactivity:	Human, Mouse, Rat, Porcine, Many Others
Immunogen:	Microtubule proteins from porcine brain.
Host:	Mouse
Clonality:	Monoclonal
Clone ID:	TU-10
Isotype:	IgM
Conjugate:	Unconjugated
Purification:	Purified by precipitation and chromatography.
Concentration:	1 mg/ml
Purity:	> 95% (by SDS-PAGE).
Product Form:	Liquid
Formulation:	Supplied in Tris Buffered Saline, pH 8.0, with 15 mM Sodium Azide.
Storage:	Shipped at 4°C. Upon delivery aliquot and store at -20°C. Avoid freeze / thaw cycles.
Disclaimer:	This product is for research use only. It is not intended for diagnostic or therapeutic use.

## Anti-alpha Tubulin + beta Tubulin Antibody [TU-10] (A85919)

Images:



Western blot of human Jurkat T cell line lysate (1% laurylmaltoside)(non-reduced sample) immunostained by Anti-Alpha, Beta-Tubulin Dimer Antibody (A85919) and Goat Anti-Mouse IgG Antibody (H+L)(HRP).