

CDH3 Polyclonal Antibody

Catalog No	A0915	Category	Primary antibody
Applications	WB IHC FC	Observed MW	Refer to Figures
Cross-Reactivity	Human	Calculated MW	91kDa

Immunogen Information

Immunogen	A synthetic peptide of human CDH3
Gene ID	1001
Swiss Prot	P22223
Synonyms	DHP; HJMD; PCAD

Product information

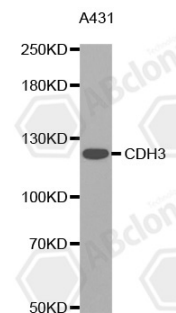
Source	Rabbit
Isotype	IgG
Purity	Affinity purification
Storage	Store at 4°C. Avoid freeze / thaw cycles. Buffer: PBS with 0.02% sodium azide, 50% glycerol, pH7.3.

Background

This gene is a classical cadherin from the cadherin superfamily. The encoded protein is a calcium-dependent cell-cell adhesion glycoprotein comprised of five extracellular cadherin repeats, a transmembrane region and a highly conserved cytoplasmic tail. This gene is located in a six-cadherin cluster in a region on the long arm of chromosome 16 that is involved in loss of heterozygosity events in breast and prostate cancer. In addition, aberrant expression of this protein is observed in cervical adenocarcinomas. Mutations in this gene have been associated with congenital hypotrichosis with juvenile macular dystrophy. [provided by RefSeq, Jul 2008]

Recommended Dilutions

WB	1:500 - 1:2000
IHC	1:50 - 1:100
FC1:20 - 1:50	



Western blot analysis of extracts of A431 cells lines, using CDH3 antibody.

Order: service@abclonal.com
Tech: support@abclonal.com
Web: abclonal.com