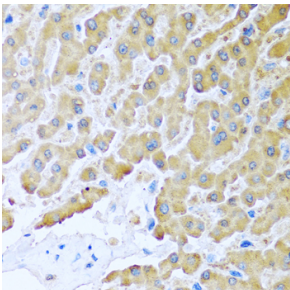


Anti-MCP2 Antibody (A10037)

Specifications:

Name:	Anti-MCP2 Antibody
Description:	Rabbit polyclonal antibody to MCP2.
Applications:	WB, IHC, ICC/IF
Recommended Dilutions:	WB: 1:500-1:2,000, IHC: 1:50-1:100, ICC/IF: 1:50-1:100
Reactivity:	Human, Mouse
Immunogen:	A synthetic peptide corresponding to a sequence within amino acids 1-99 of human CCL8 (NP_005614.2).
Sequence:	MKVSAALLCLLLMAATFSPQGLAQPDSVSIPITCCFNVINRKIPIQRLESYTRITNIQ CPKEAVIFKTKRGKEVCADPKERWVRDSMKHLDQIFQNLKP
Host:	Rabbit
Clonality:	Polyclonal
Isotype:	IgG
Conjugate:	Unconjugated
Purification:	Affinity purification.
Product Form:	Liquid
Formulation:	Supplied in Phosphate Buffered Saline, pH 7.3, with 50% Glycerol and 0.01% Thiomersal.
Storage:	Shipped at 4°C. Upon delivery aliquot and store at -20°C. Avoid freeze / thaw cycles.
Disclaimer:	This product is for research use only. It is not intended for diagnostic or therapeutic use.

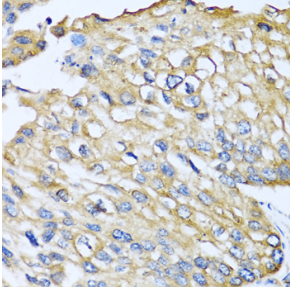
Images:



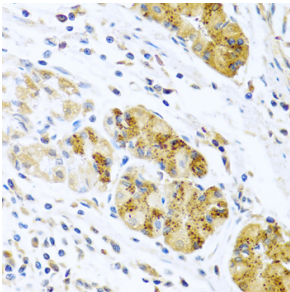
Immunohistochemistry analysis of paraffin-embedded human liver using Anti-MCP2 Antibody (A10037) at a dilution of 1:100 (40x lens). Perform microwave antigen retrieval with 10 mM PBS buffer pH 7.2 before commencing with IHC staining protocol.

Anti-MCP2 Antibody (A10037)

Images continued:



Immunohistochemistry analysis of paraffin-embedded human prostate cancer using Anti-MCP2 Antibody (A10037) at a dilution of 1:100 (40x lens). Perform microwave antigen retrieval with 10 mM PBS buffer pH 7.2 before commencing with IHC staining protocol.



Immunohistochemistry analysis of paraffin-embedded human stomach using Anti-MCP2 Antibody (A10037) at a dilution of 1:100 (40x lens). Perform microwave antigen retrieval with 10 mM PBS buffer pH 7.2 before commencing with IHC staining protocol.