

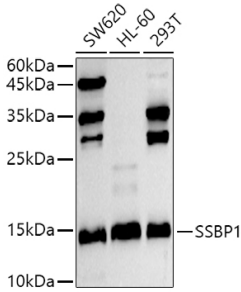
Anti-SSBP1 Antibody (A10039)

Specifications:

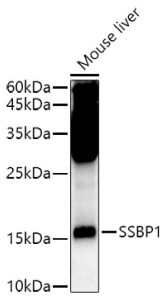
Name:	Anti-SSBP1 Antibody
Description:	Rabbit polyclonal antibody to SSBP1.
Applications:	WB, ICC/IF, IP
Recommended Dilutions:	WB: 1:500-1:2,000, ICC/IF: 1:50-1:100, IP: 1:50-1:200
Reactivity:	Human, Mouse
Immunogen:	Recombinant fusion protein containing a sequence corresponding to amino acids 1-148 of human SSBP1 (NP_001243442.1).
Sequence:	MFRRPVLQVLRQFVRHESETTTSLVLERSLNVRVHLLGRVGDVPVLRQVEGKNPVTIFS LATNEMWRSGDSEVYQLGDVSQKTTWHRISVFRPGLRDVAYQYVKKGSRIYLEGKIDY GEYMDKNNVRRQATTIADNIIFLSDQTKEKE
Host:	Rabbit
Clonality:	Polyclonal
Isotype:	IgG
Conjugate:	Unconjugated
Purification:	Affinity purification.
Molecular Weight:	17 kDa
Product Form:	Liquid
Formulation:	Supplied in Phosphate Buffered Saline, pH 7.3, with 50% Glycerol and 0.02% Sodium Azide.
Storage:	Shipped at 4°C. Upon delivery aliquot and store at -20°C. Avoid freeze / thaw cycles.
Disclaimer:	This product is for research use only. It is not intended for diagnostic or therapeutic use.

Anti-SSBP1 Antibody (A10039)

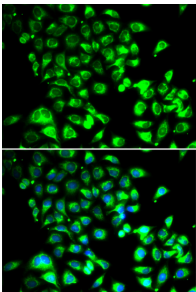
Images:



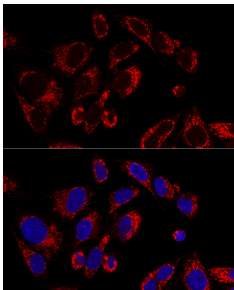
Western blot analysis of extracts of various cell lines, using Anti-SSBP1 Antibody (A10039) at 1:500 dilution. The secondary antibody was Goat Anti-Rabbit IgG H&L Antibody (HRP) at 1:10,000 dilution. Lysates/proteins were present at 25µg per lane. The blocking buffer used was 3% non-fat dry milk in TBST. Detection was with a ECL Basic Kit. Exposure time: 30s.



Western blot analysis of extracts of Mouse liver, using Anti-SSBP1 Antibody (A10039) at 1:500 dilution. The secondary antibody was Goat Anti-Rabbit IgG H&L Antibody (HRP) at 1:10,000 dilution. Lysates/proteins were present at 25µg per lane. The blocking buffer used was 3% non-fat dry milk in TBST. Detection was with a ECL Enhanced Kit (RM00021). Exposure time: 90s.



Immunofluorescence analysis of U2OS cells using Anti-SSBP1 Antibody (A10039). DAPI was used to stain the cell nuclei (blue).



Confocal immunofluorescence analysis of U-2 OS cells using Anti-SSBP1 Antibody (A10039) at a dilution of 1:100. DAPI was used to stain the cell nuclei (blue).