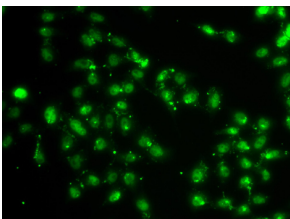


Anti-L3MBTL1 Antibody (A10056)

Specifications:

Name:	Anti-L3MBTL1 Antibody
Description:	Rabbit polyclonal antibody to L3MBTL1.
Applications:	ICC/IF
Recommended Dilutions:	ICC/IF: 1:50-1:100
Reactivity:	Human
Immunogen:	Recombinant fusion protein containing a sequence corresponding to amino acids 533-772 of human L3MBTL1 (NP_056293.4).
Sequence:	PLSYRSLPHTRTSKYSFHHRKCPTPGCDGSGHVTGKFTAHHCLSGCPLAERNQSRLKA ELSDSEASARKKNLSGFSRKKPRHHGRIGRPPKYRKIPQEDFQTLTPDVVHQSLFMS ALSAHPDRSLSVCWEQHCKLLPGVAGISASTVAKWTIDEVFGFVQTLTGCEDQARLFK DEARIVRVTHVSGKTLVWTVAQLGDLVCSDDLQEGKGILETGVHSLLCSLPTHLLAKL SFASDSQY
Host:	Rabbit
Clonality:	Polyclonal
Isotype:	IgG
Conjugate:	Unconjugated
Purification:	Affinity purification.
Product Form:	Liquid
Formulation:	Supplied in Phosphate Buffered Saline, pH 7.3, with 50% Glycerol and 0.02% Sodium Azide.
Storage:	Shipped at 4°C. Upon delivery aliquot and store at -20°C. Avoid freeze / thaw cycles.
Disclaimer:	This product is for research use only. It is not intended for diagnostic or therapeutic use.

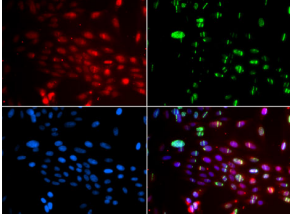
Images:



Immunofluorescence analysis of A549 cells using Anti-L3MBTL1 Antibody (A10056).

Anti-L3MBTL1 Antibody (A10056)

Images continued:



Immunofluorescence analysis of GFP-RNF168 transgenic U2OS cells using Anti-L3MBTL1 Antibody (A10056). Green:GFP-RNF168 fusion protein expression for DNA damage marker. Blue:DAPI for nuclear staining. RNF168(GFP) can be used to mark cells damaged by UV-A laser for they always gather around DNA damage region.