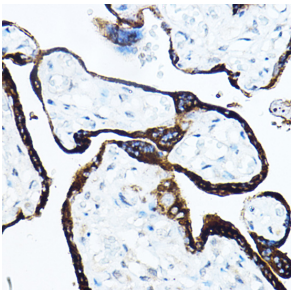


Anti-Growth Hormone Antibody (A10191)

Specifications:

Name:	Anti-Growth Hormone Antibody
Description:	Rabbit polyclonal antibody to Growth Hormone.
Applications:	WB, IHC, ICC/IF
Recommended Dilutions:	WB: 1:500-1:2,000, IHC: 1:50-1:200, ICC/IF: 1:50-1:200
Reactivity:	Human
Immunogen:	A synthetic peptide corresponding to a sequence within amino acids 100-200 of human GH1 (NP_000506.2).
Sequence:	ELLRISLLLIQSWLEPVQFLRSVFANSLVYGASDSNVYDLLKDLEEGIQTLMGRLEDG SPRTGQIFKQTYSKFDTNSHNDDALLKNYGLLYCFRKDMDKVE
Host:	Rabbit
Clonality:	Polyclonal
Isotype:	IgG
Conjugate:	Unconjugated
Purification:	Affinity purification.
Product Form:	Liquid
Formulation:	Supplied in Phosphate Buffered Saline, pH 7.3, with 50% Glycerol and 0.05% Proclin 300.
Storage:	Shipped at 4°C. Upon delivery aliquot and store at -20°C. Avoid freeze / thaw cycles.
Disclaimer:	This product is for research use only. It is not intended for diagnostic or therapeutic use.

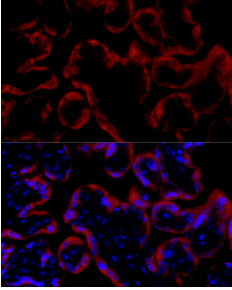
Images:



Immunohistochemistry analysis of paraffin-embedded human placenta using Anti-Growth Hormone Antibody (A10191) at a dilution of 1:50 (40x lens). Perform high pressure antigen retrieval with 10 mM citrate buffer pH 6.0 before commencing with IHC staining protocol.

Anti-Growth Hormone Antibody (A10191)

Images continued:



Immunofluorescence analysis of human placenta cells using Anti-Growth Hormone Antibody (A10191) at a dilution of 1:20 (40x lens). DAPI was used to stain the cell nuclei (blue).