

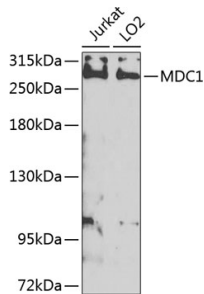
Anti-MDC1 Antibody (A10402)

Specifications:

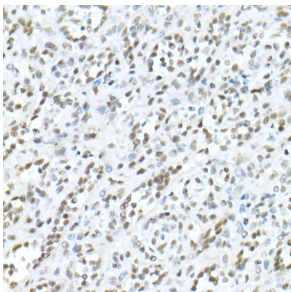
Name:	Anti-MDC1 Antibody
Description:	Rabbit polyclonal antibody to MDC1.
Applications:	WB, IHC, ICC/IF
Recommended Dilutions:	WB: 1:500-1:2,000, IHC: 1:50-1:200, ICC/IF: 1:50-1:200
Reactivity:	Human
Immunogen:	Recombinant fusion protein containing a sequence corresponding to amino acids 1-350 of human MDC1 (NP_055456.2).
Sequence:	MEDTQAIDWDVEEEEEETEQSSSESLRCNVEPVGRLHIFSGAHGPEKDFPLHLGKNVVGRL MPDCSVALPFPSISKQHAEIEILAWDKAPILRDCGSLNGTQILRPPKVLSPGVSHRLR DQELILFADLLCQYHRLDVSLPFVSRGPLTVEETPRVQGETQPQRLLLAEDSEEEVDF LSERRMVKKSRTTSSSVIVPESDEEGHSPVLGGLGPPFAFNLSDDVEEGQQPATEE ASSAARRGATVEAKQSEAEVWTEIQLEKDQPLVKERDNDTKVVRGAGNGVVPAGVILE RSQPPGEDSDTDVDDDSRPPGRPAEVHLERAQPFGLSDTDAEEERIPATPVVIPMK KR
Host:	Rabbit
Clonality:	Polyclonal
Isotype:	IgG
Conjugate:	Unconjugated
Purification:	Affinity purification.
Molecular Weight:	270 kDa
Product Form:	Liquid
Formulation:	Supplied in Phosphate Buffered Saline, pH 7.3, with 50% Glycerol and 0.02% Sodium Azide.
Storage:	Shipped at 4°C. Upon delivery aliquot and store at -20°C. Avoid freeze / thaw cycles.
Disclaimer:	This product is for research use only. It is not intended for diagnostic or therapeutic use.

Anti-MDC1 Antibody (A10402)

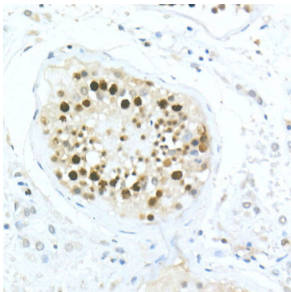
Images:



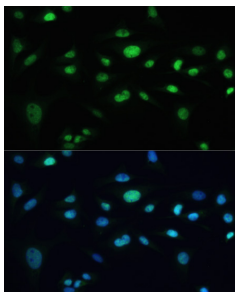
Western blot analysis of extracts of various cell lines, using Anti-MDC1 Antibody (A10402) at 1:1,000 dilution. The secondary antibody was Goat Anti-Rabbit IgG H&L Antibody (HRP) at 1:10,000 dilution. Lysates/proteins were present at 25 μ g per lane. The blocking buffer used was 3% non-fat dry milk in TBST. Detection was with a ECL Enhanced Kit (RM00021). Exposure time: 5s.



Immunohistochemistry analysis of paraffin-embedded human spleen using Anti-MDC1 Antibody (A10402) at a dilution of 1:20 (40x lens). Perform high pressure antigen retrieval with 10 mM citrate buffer pH 6.0 before commencing with IHC staining protocol.



Immunohistochemistry analysis of paraffin-embedded human testis using Anti-MDC1 Antibody (A10402) at a dilution of 1:20 (40x lens). Perform high pressure antigen retrieval with 10 mM citrate buffer pH 6.0 before commencing with IHC staining protocol.



Immunofluorescence analysis of U-2 OS cells using Anti-MDC1 Antibody (A10402) at a dilution of 1:100. DAPI was used to stain the cell nuclei (blue).