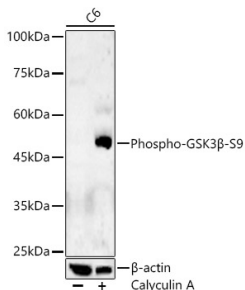


Anti-GSK3 beta (phospho Ser9) Antibody (A10877)

Specifications:

Name:	Anti-GSK3 beta (phospho Ser9) Antibody
Description:	Rabbit polyclonal antibody to GSK3 beta (phospho Ser9).
Applications:	WB, ICC/IF, IP
Recommended Dilutions:	WB: 1:100-1:500, ICC/IF: 1:50-1:200, IP: 1:500-1:1,000
Reactivity:	Human, Mouse, Rat
Immunogen:	A synthetic phosphorylated peptide around S9 of human GSK3 β (NP_001139628.1).
Sequence:	TTSFA
Host:	Rabbit
Clonality:	Polyclonal
Isotype:	IgG
Conjugate:	Unconjugated
Purification:	Affinity purification.
Molecular Weight:	47 kDa
Product Form:	Liquid
Formulation:	Supplied in Phosphate Buffered Saline, pH 7.3, with 50% Glycerol and 0.01% Thiomersal.
Storage:	Shipped at 4°C. Upon delivery aliquot and store at -20°C. Avoid freeze / thaw cycles.
Disclaimer:	This product is for research use only. It is not intended for diagnostic or therapeutic use.

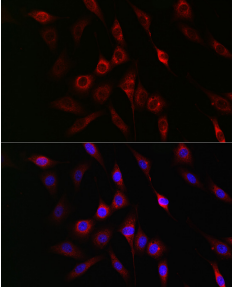
Images:



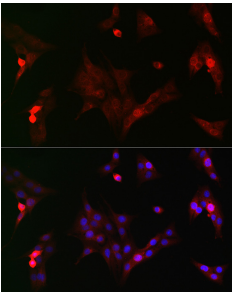
Western blot analysis of C6, using Anti-GSK3 beta (phospho Ser9) Antibody (A10877) at 1:500 dilution. The secondary antibody was Goat Anti-Rabbit IgG H&L Antibody (HRP) at 1:10,000 dilution. Lysates/proteins were present at 25 μ g per lane. The blocking buffer used was 3% non-fat dry milk in TBST. Detection was with a ECL Basic Kit. Exposure time: 180s.

Anti-GSK3 beta (phospho Ser9) Antibody (A10877)

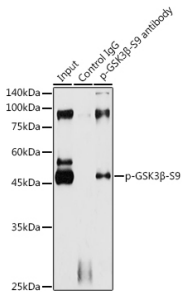
Images continued:



Immunofluorescence analysis of NIH/3T3 cells using Anti-GSK3 beta (phospho Ser9) Antibody (A10877) at a dilution of 1:50 (40x lens). DAPI was used to stain the cell nuclei (blue).



Immunofluorescence analysis of PC-12 cells using Anti-GSK3 beta (phospho Ser9) Antibody (A10877) at a dilution of 1:50 (40x lens). DAPI was used to stain the cell nuclei (blue).



Immunoprecipitation analysis of 300µg extracts of HeLa cells using 3µg of Anti-GSK3 beta (phospho Ser9) Antibody (A10877). This Western blot was performed on the immunoprecipitate using Anti-GSK3 beta (phospho Ser9) Antibody (A10877) at a dilution of 1:1000.