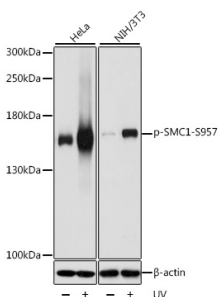


Anti-SMC1A (phospho Ser957) Antibody (A10885)

Specifications:

Name:	Anti-SMC1A (phospho Ser957) Antibody
Description:	Rabbit polyclonal antibody to SMC1A (phospho Ser957).
Applications:	WB, IHC, IP
Recommended Dilutions:	WB: 1:500-1:2,000, IHC: 1:50-1:200, IP: 1:500-1:1,000
Reactivity:	Human, Mouse, Rat
Immunogen:	A synthetic phosphorylated peptide around S957 of human SMC1A (NP_006297.2).
Sequence:	GSSQG
Host:	Rabbit
Clonality:	Polyclonal
Isotype:	IgG
Conjugate:	Unconjugated
Purification:	Affinity purification.
Molecular Weight:	160 kDa
Product Form:	Liquid
Formulation:	Supplied in Phosphate Buffered Saline, pH 7.3, with 50% Glycerol and 0.02% Sodium Azide.
Storage:	Shipped at 4°C. Upon delivery aliquot and store at -20°C. Avoid freeze / thaw cycles.
Disclaimer:	This product is for research use only. It is not intended for diagnostic or therapeutic use.

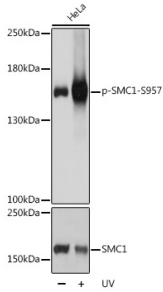
Images:



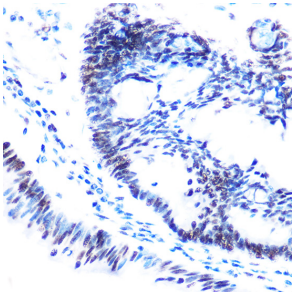
Western blot analysis of extracts of various cell lines, using Anti-SMC1A (phospho Ser957) Antibody (A10885) at 1:1,000 dilution. HeLa and NIH/3T3 cells were treated by UV for 15-30 minutes. The secondary antibody was Goat Anti-Rabbit IgG H&L Antibody (HRP) at 1:10,000 dilution. Lysates/proteins were present at 25µg per lane. The blocking buffer used was 3% BSA. Detection was with a ECL Basic Kit. Exposure time: 3s.

Anti-SMC1A (phospho Ser957) Antibody (A10885)

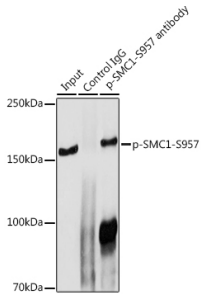
Images continued:



Western blot analysis of extracts of HeLa cells, using Anti-SMC1A (phospho Ser957) Antibody (A10885) at 1:1,000 dilution or SMC1A antibody (A7008). HeLa cells were treated by UV at room temperature for 15-30 minutes. The secondary antibody was Goat Anti-Rabbit IgG H&L Antibody (HRP) at 1:10,000 dilution. Lysates/proteins were present at 25µg per lane. The blocking buffer used was 3% BSA. Detection was with a ECL Basic Kit. Exposure time: 3s.



Immunohistochemistry analysis of paraffin-embedded human colon carcinoma tissue using Anti-SMC1A (phospho Ser957) Antibody (A10885) at a dilution of 1:100 (40x lens). Perform high pressure antigen retrieval with 10 mM citrate buffer pH 6.0 before commencing with IHC staining protocol.



Immunoprecipitation analysis of 300µg extracts of HeLa cells using 3µg of Anti-SMC1A (phospho Ser957) Antibody (A10885). This Western blot was performed on the immunoprecipitate using Anti-SMC1A (phospho Ser957) Antibody (A10885) at a dilution of 1:1000.