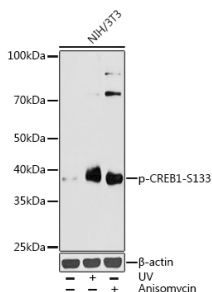


Anti-CREB (phospho Ser133) Antibody (A10929)

Specifications:

Name:	Anti-CREB (phospho Ser133) Antibody
Description:	Rabbit polyclonal antibody to CREB (phospho Ser133).
Applications:	WB, IHC
Recommended Dilutions:	WB: 1:500-1:1,000, IHC: 1:50-1:100
Reactivity:	Human, Mouse, Rat
Immunogen:	A synthetic phosphorylated peptide around S133 of human CREB1 (NP_604391.1).
Sequence:	RPSYR
Host:	Rabbit
Clonality:	Polyclonal
Isotype:	IgG
Conjugate:	Unconjugated
Purification:	Affinity purification.
Molecular Weight:	40 kDa
Product Form:	Liquid
Formulation:	Supplied in Phosphate Buffered Saline, pH 7.3, with 50% Glycerol and 0.01% Thiomersal.
Storage:	Shipped at 4°C. Upon delivery aliquot and store at -20°C. Avoid freeze / thaw cycles.
Disclaimer:	This product is for research use only. It is not intended for diagnostic or therapeutic use.

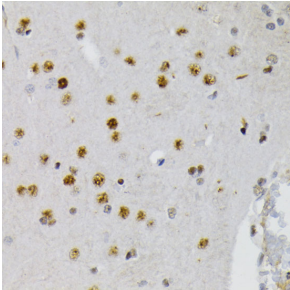
Images:



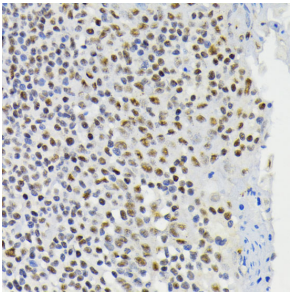
Western blot analysis of extracts of NIH/3T3 cells, using Anti-CREB (phospho Ser133) Antibody (A10929) at 1:1,000 dilution. NIH/3T3 cells were treated by UV at room temperature for 15-30 minutes. NIH/3T3 cells were treated by Anisomycin (25 ug/ml) at 37°C for 30 minutes. The secondary antibody was Goat Anti-Rabbit IgG H&L Antibody (HRP) at 1:10,000 dilution. Lysates/proteins were present at 25µg per lane. The blocking buffer used was 3% non-fat dry milk in TBST. Detection was with a ECL Basic Kit. Exposure time: 180s.

Anti-CREB (phospho Ser133) Antibody (A10929)

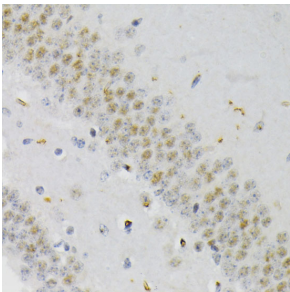
Images continued:



Immunohistochemistry analysis of paraffin-embedded rat brain using Anti-CREB (phospho Ser133) Antibody (A10929) at a dilution of 1:200 (40x lens). Perform microwave antigen retrieval with 10 mM Tris/EDTA buffer pH 9.0 before commencing with IHC staining protocol.



Immunohistochemistry analysis of paraffin-embedded human tonsil using Anti-CREB (phospho Ser133) Antibody (A10929) at a dilution of 1:200 (40x lens). Perform microwave antigen retrieval with 10 mM Tris/EDTA buffer pH 9.0 before commencing with IHC staining protocol.



Immunohistochemistry analysis of paraffin-embedded mouse brain using Anti-CREB (phospho Ser133) Antibody (A10929) at a dilution of 1:200 (40x lens). Perform microwave antigen retrieval with 10 mM Tris/EDTA buffer pH 9.0 before commencing with IHC staining protocol.