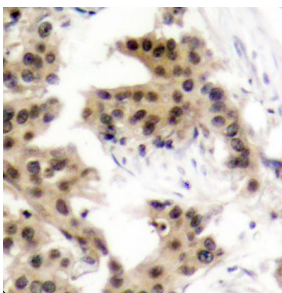


## Anti-NFkB p105 / p50 (phospho Ser893) Antibody (A10945)

### Specifications:

Name:	Anti-NFkB p105 / p50 (phospho Ser893) Antibody
Description:	Rabbit polyclonal antibody to NFkB p105 / p50 (phospho Ser893).
Applications:	IHC, ICC/IF
Recommended Dilutions:	IHC: 1:50-1:200, ICC/IF: 1:100-1:200
Reactivity:	Human
Immunogen:	A phospho specific peptide corresponding to residues surrounding S893 of human NFkB1.
Host:	Rabbit
Clonality:	Polyclonal
Isotype:	IgG
Conjugate:	Unconjugated
Purification:	Affinity purification.
Product Form:	Liquid
Formulation:	Supplied in Phosphate Buffered Saline, pH 7.3, with 50% Glycerol and 0.02% Sodium Azide.
Storage:	Shipped at 4°C. Upon delivery aliquot and store at -20°C. Avoid freeze / thaw cycles.
Disclaimer:	This product is for research use only. It is not intended for diagnostic or therapeutic use.

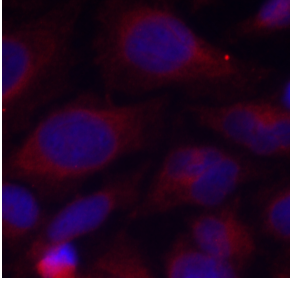
### Images:



Immunohistochemistry analysis of paraffin-embedded human breast carcinoma tissue using Anti-NFkB p105 / p50 (phospho Ser893) Antibody (A10945). Perform microwave antigen retrieval with 10 mM Tris/EDTA buffer pH 9.0 before commencing with IHC staining protocol.

## Anti-NFkB p105 / p50 (phospho Ser893) Antibody (A10945)

Images continued:



Immunofluorescence analysis of methanol-fixed HeLa cells using Anti-NFkB p105 / p50 (phospho Ser893) Antibody (A10945).