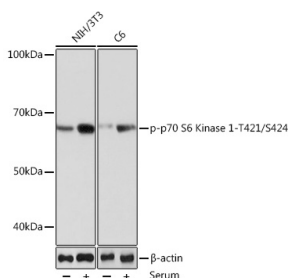


Anti-S6K1 (phospho Thr421 + Ser424) Antibody [ARC0107] (A10982)

Specifications:

Name:	Anti-S6K1 (phospho Thr421 + Ser424) Antibody [ARC0107]
Description:	Rabbit monoclonal [ARC0107] antibody to S6K1 (phospho Thr421 + Ser424).
Applications:	WB, IHC, ICC/IF
Recommended Dilutions:	WB: 1:500-1:2,000, IHC: 1:50-1:200, ICC/IF: 1:50-1:200
Reactivity:	Human, Mouse, Rat
Immunogen:	A synthesized peptide derived from human Phospho-S6K1 (T421 + S424).
Host:	Rabbit
Clonality:	Monoclonal
Clone ID:	ARC0107
Isotype:	IgG
Conjugate:	Unconjugated
Purification:	Affinity purification.
Molecular Weight:	70 kDa
Product Form:	Liquid
Formulation:	Supplied in Phosphate Buffered Saline, pH 7.3, with 50% Glycerol, 0.05% BSA, and 0.02% Sodium Azide.
Storage:	Shipped at 4°C. Upon delivery aliquot and store at -20°C. Avoid freeze / thaw cycles.
Disclaimer:	This product is for research use only. It is not intended for diagnostic or therapeutic use.

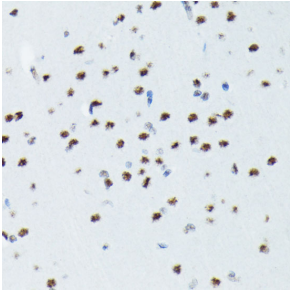
Images:



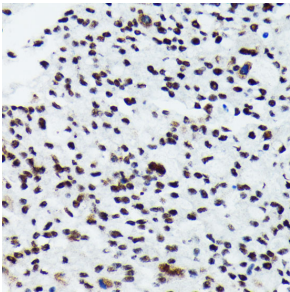
Western blot analysis of extracts of various cell lines, using Anti-S6K1 (phospho Thr421 + Ser424) Antibody [ARC0107] (A10982) at 1:1,000 dilution. NIH/3T3 and C6 cells were treated by 10% FBS at 37°C for 30 minutes after serum-starvation overnight. The secondary antibody was Goat Anti-Rabbit IgG H&L Antibody (HRP) at 1:10,000 dilution. Lysates/proteins were present at 25µg per lane. The blocking buffer used was 3% non-fat dry milk in TBST. Detection was with a ECL Basic Kit. Exposure time: 60S.

Anti-S6K1 (phospho Thr421 + Ser424) Antibody [ARC0107] (A10982)

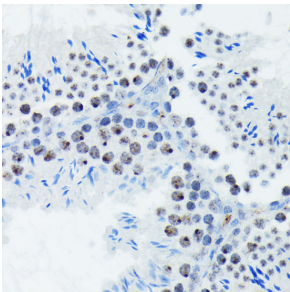
Images continued:



Immunohistochemistry analysis of paraffin-embedded rat brain using Anti-S6K1 (phospho Thr421 + Ser424) Antibody [ARC0107] (A10982) at a dilution of 1:100 (40x lens). Perform microwave antigen retrieval with 10 mM Tris/EDTA buffer pH 9.0 before commencing with IHC staining protocol.



Immunohistochemistry analysis of paraffin-embedded human oophoroma using Anti-S6K1 (phospho Thr421 + Ser424) Antibody [ARC0107] (A10982) at a dilution of 1:100 (40x lens). Perform microwave antigen retrieval with 10 mM Tris/EDTA buffer pH 9.0 before commencing with IHC staining protocol.



Immunohistochemistry analysis of paraffin-embedded mouse testis using Anti-S6K1 (phospho Thr421 + Ser424) Antibody [ARC0107] (A10982) at a dilution of 1:100 (40x lens). Perform microwave antigen retrieval with 10 mM Tris/EDTA buffer pH 9.0 before commencing with IHC staining protocol.