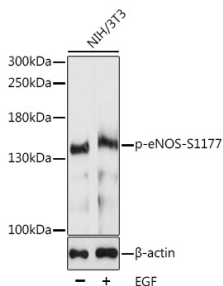


Anti-eNOS (phospho Ser1177) Antibody (A10995)

Specifications:

Name:	Anti-eNOS (phospho Ser1177) Antibody
Description:	Rabbit polyclonal antibody to eNOS (phospho Ser1177).
Applications:	WB, IHC
Recommended Dilutions:	WB: 1:500-1:2,000, IHC: 1:50-1:200
Reactivity:	Human, Mouse
Immunogen:	A synthetic phosphorylated peptide around S1177 of human eNOS (NP_000594.2).
Sequence:	TQSFS
Host:	Rabbit
Clonality:	Polyclonal
Isotype:	IgG
Conjugate:	Unconjugated
Purification:	Affinity purification.
Molecular Weight:	133 kDa
Product Form:	Liquid
Formulation:	Supplied in Phosphate Buffered Saline, pH 7.3, with 50% Glycerol and 0.01% Thiomersal.
Storage:	Shipped at 4°C. Upon delivery aliquot and store at -20°C. Avoid freeze / thaw cycles.
Disclaimer:	This product is for research use only. It is not intended for diagnostic or therapeutic use.

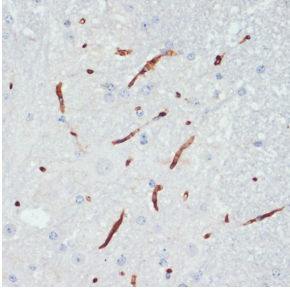
Images:



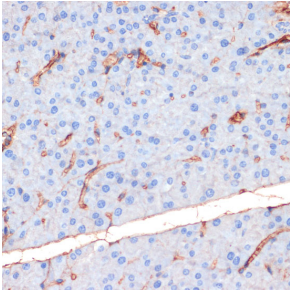
Western blot analysis of extracts of NIH/3T3 cells, using Anti-eNOS (phospho Ser1177) Antibody (A10995) at 1:1,000 dilution. NIH/3T3 cells were treated by EGF (100ng/ml) for 30 minutes after serum-starvation overnight. The secondary antibody was Goat Anti-Rabbit IgG H&L Antibody (HRP) at 1:10,000 dilution. Lysates/proteins were present at 25µg per lane. The blocking buffer used was 3% BSA. Detection was with a ECL Enhanced Kit (RM00021). Exposure time: 60s.

Anti-eNOS (phospho Ser1177) Antibody (A10995)

Images continued:



Immunohistochemistry analysis of paraffin-embedded mouse spinal cord using Anti-eNOS (phospho Ser1177) Antibody (A10995) at a dilution of 1:200 (40x lens). Perform microwave antigen retrieval with 10 mM Tris/EDTA buffer pH 9.0 before commencing with IHC staining protocol.



Immunohistochemistry analysis of paraffin-embedded mouse pancreas using Anti-eNOS (phospho Ser1177) Antibody (A10995) at a dilution of 1:200 (40x lens). Perform microwave antigen retrieval with 10 mM Tris/EDTA buffer pH 9.0 before commencing with IHC staining protocol.