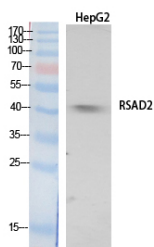


## Anti-RSAD2 Antibody (A100780)

### Specifications:

Name:	Anti-RSAD2 Antibody
Description:	Rabbit polyclonal antibody to RSAD2.
Applications:	WB, ELISA
Recommended Dilutions:	WB: 1:500-1:1000, ELISA: 1:10000
Reactivity:	Human
Immunogen:	Synthetic peptide derived from the N-terminal region of human RSAD2 (amino acids 21-70).
Host:	Rabbit
Clonality:	Polyclonal
Isotype:	IgG
Conjugate:	Unconjugated
Purification:	The antibody was affinity-purified from rabbit antiserum by affinity-chromatography using epitope-specific peptide.
Molecular Weight:	42kDa
Product Form:	Liquid
Formulation:	Supplied in Phosphate Buffered Saline (without Mg <sup>2+</sup> and Ca <sup>2+</sup> ), pH 7.4, with 150mM NaCl, 0.02% Sodium Azide, and 50% Glycerol.
Storage:	Shipped at 4°C. Upon delivery aliquot and store at -20°C. Avoid freeze / thaw cycles.
Disclaimer:	This product is for research use only. It is not intended for diagnostic or therapeutic use.

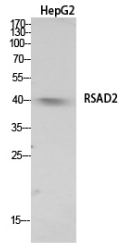
### Images:



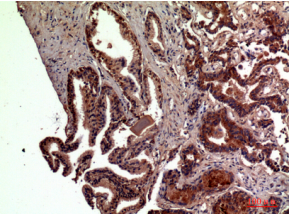
Western blot analysis of extracts from HepG2 cells using Anti-RSAD2 Antibody.

## Anti-RSAD2 Antibody (A100780)

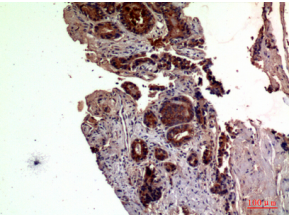
Images continued:



Western blot analysis of HepG2 cells using Anti-RSAD2 Antibody.



Immunohistochemical analysis of paraffin-embedded human prostate cancer using Anti-RSAD2 Antibody.



Immunohistochemical analysis of paraffin-embedded human prostate cancer using Anti-RSAD2 Antibody.