

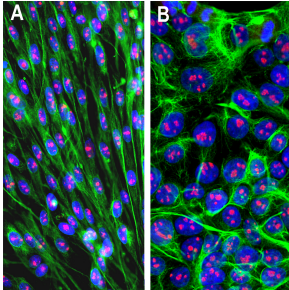
Anti-Fibrillarin Antibody [4A4] (A104318)

Specifications:

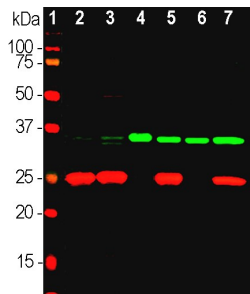
Name:	Anti-Fibrillarin Antibody [4A4]
Description:	Mouse monoclonal (4A4) antibody to Fibrillarin.
Specificity:	The epitope for the antibody is located within the sequence TLEPYERDHAVVVGVYRPPP, amino acids 298-317 of human Fibrillarin, at the C-terminal of the globular domain.
Applications:	WB, ICC/IF, IHC
Recommended Dilutions:	WB: 1:2,000, ICC/IF: 1:1,000-1:5,000, IHC: 1:1,000-1:5,000
Reactivity:	Human, Rat, Mouse, Horse, Canine, Monkey
Immunogen:	Recombinant full-length human Fibrillarin, expressed in and purified from E. coli.
Host:	Mouse
Clonality:	Monoclonal
Clone ID:	4A4
Isotype:	IgG1
Conjugate:	Unconjugated
Purification:	Immunogen affinity purification.
Concentration:	1 mg/ml
Molecular Weight:	34.5 kDa
Product Form:	Liquid
Formulation:	Supplied in Phosphate Buffered Saline with 50% Glycerol and 5mM Sodium Azide.
Storage:	Shipped at 4°C. Upon delivery aliquot and store at -20°C. Avoid freeze / thaw cycles.
Disclaimer:	This product is for research use only. It is not intended for diagnostic or therapeutic use.

Anti-Fibrillarin Antibody [4A4] (A104318)

Images:



Immunofluorescent analysis of (A) C6 rat glioma cells and (B) HEK293 human embryonic kidney cells stained with Anti-Fibrillarin Antibody (1:1,000 | red), in both cases co-stained with Anti-Vimentin Antibody (1:10,000 | green). The blue is DAPI staining of nuclear DNA. The Anti-Fibrillarin Antibody detects fibrillarin protein localized in nucleoli while the Anti-Vimentin Antibody produces strong staining of cytoplasmic intermediate filaments.



Western blot analysis of different tissue and cell line lysates using Anti-Fibrillarin Antibody (1:2,000 | green): [1] protein standard (red), [2] rat whole brain, [3] mouse whole brain, [4] NIH-3T3 cells, [5] HEK293, [6] HeLa, and [7] SH-SY5Y cells. Strong band at ~35kDa corresponds to fibrillarin protein seen in all cell line lysates. A much weaker band is seen in tissue lysates since fibrillarin is more heavily expressed in rapidly dividing cells. The blot simultaneously was probed with Anti-UCHL1 Antibody (1:3,000 | red), revealing the ~25kDa UCHL1 protein in lysates of tissues containing neurons or cells with neuronal properties.