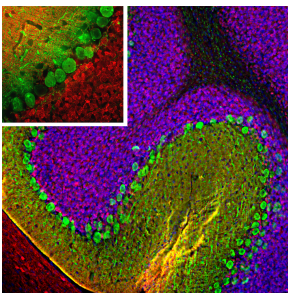


Anti-Calretinin Antibody (A104325)

Specifications:

Name:	Anti-Calretinin Antibody
Description:	Rabbit polyclonal antibody to Calretinin.
Applications:	WB, ICC/IF, IHC
Recommended Dilutions:	WB: 1:5,000-1:10,000, ICC/IF: 1:5,000-1:10,000, IHC: 1:5,000-1:10,000
Reactivity:	Human, Rat, Mouse
Immunogen:	Recombinant full-length human Calretinin, expressed in and purified from E. coli.
Host:	Rabbit
Clonality:	Polyclonal
Isotype:	IgG
Conjugate:	Unconjugated
Molecular Weight:	29 kDa
Purity:	Whole antiserum.
Product Form:	Liquid
Formulation:	Supplied as an aliquot of serum with 5mM Sodium Azide.
Storage:	Shipped at 4°C. Upon delivery aliquot and store at -20°C. Avoid freeze / thaw cycles.
Disclaimer:	This product is for research use only. It is not intended for diagnostic or therapeutic use.

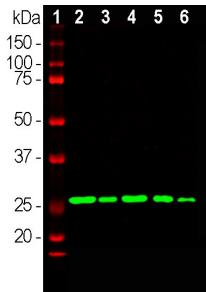
Images:



Immunofluorescent analysis of rat cerebellum section stained with Anti-Calretinin Antibody (1:5,000 | red), and co-stained with Anti-Calbindin Antibody (1:1,000 | green). Following transcardial perfusion of rat with 4% paraformaldehyde, brain was post fixed for 24 hours, cut to 45 μ M, and free-floating sections were stained with the above antibodies. The Anti-Calretinin Antibody stains interneurons predominantly in the molecular layer, while the Anti-Calbindin Antibody strongly labels the dendrites and perikarya of Purkinje cells in the molecular layer of the cerebellum.

Anti-Calretinin Antibody (A104325)

Images continued:



Western blot analysis of different tissue lysates probed with Anti-Calretinin Antibody (1:10,000 | green): [1] protein standard (red), [2] rat brain, [3] rat spinal cord, [4] mouse brain, [5] mouse spinal cord, and [6] cow spinal cord. A band at 29kDa corresponds to the calretinin protein.