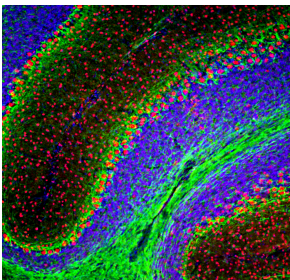


Anti-FOX2 Antibody (A104328)

Specifications:

Name:	Anti-FOX2 Antibody
Description:	Chicken polyclonal antibody to FOX2.
Applications:	WB, ICC/IF, IHC
Recommended Dilutions:	WB: 1:1,000, ICC/IF: 1:2,000, IHC: 1:2,000
Reactivity:	Human, Rat, Mouse
Immunogen:	Recombinant construct corresponding to N-terminal 99 amino acids of human FOX2, expressed in and purified from E. coli
Host:	Chicken
Clonality:	Polyclonal
Isotype:	IgY
Conjugate:	Unconjugated
Molecular Weight:	50-68 kDa
Purity:	IgY preparation.
Product Form:	Liquid
Formulation:	Supplied as an aliquot of IgY preparation with 5mM Sodium Azide.
Storage:	Shipped at 4°C. Upon delivery aliquot and store at -20°C. Avoid freeze / thaw cycles.
Disclaimer:	This product is for research use only. It is not intended for diagnostic or therapeutic use.

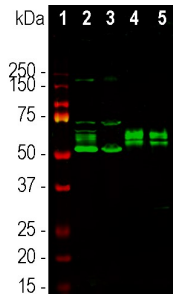
Images:



Immunofluorescent analysis of mouse cerebellum section stained with Anti-FOX2 Antibody (1:2,000 | red), and co-stained with Anti-NF-L Antibody (1:5,000 | green). The blue is Hoechst staining of nuclear DNA. Following transcardial perfusion of mouse with 4% paraformaldehyde, brain was post fixed for 24 hours, cut to 45 μ M, and free-floating sections were stained with above antibodies. Anti-FOX2 Antibody reveals protein expressed in the nuclei of certain granule cells and all Purkinje cells, while Anti-NF-L Antibody labels dendrites and axons.

Anti-FOX2 Antibody (A104328)

Images continued:



Western blot analysis of nuclear enriched fractions from different tissue and cells using Anti-FOX2 Antibody in green: [1] protein standard , [2] rat brain, [3] mouse brain, [4] HEK293, and [5] NIH-3T3 cells. The bands between 50kDa and 75kDa correspond to the FOX2 protein.