

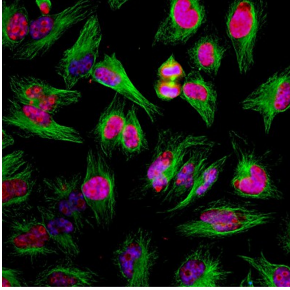
Anti-Ki67 Antibody (A104340)

Specifications:

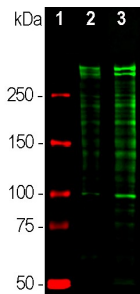
Name:	Anti-Ki67 Antibody
Description:	Chicken polyclonal antibody to Ki67.
Applications:	WB, ICC/IF
Recommended Dilutions:	WB: 1:5,000, ICC/IF: 1:1,000-1:5,000
Reactivity:	Human, Rat, Mouse
Immunogen:	Recombinant construct including amino acids 1-300 (N-terminal region) and 1,111-1,490 (internal region) of the human Ki67 sequence, a region corresponding to 2nd, 3rd, and 4th Ki67 type repeats.
Host:	Chicken
Clonality:	Polyclonal
Isotype:	IgY
Conjugate:	Unconjugated
Molecular Weight:	345 kDa, 395 kDa
Purity:	IgY preparation.
Product Form:	Liquid
Formulation:	Supplied as an aliquot of IgY preparation with 5mM Sodium Azide.
Storage:	Shipped at 4°C. For short-term storage, store at 4°C. For long-term storage, mix 1:1 with glycerol and store at -20°C. Avoid freeze / thaw cycles.
General Notes:	Please note, Ki67 proteins are very unstable and only expressed in large amounts in situations where many cells are dividing. As a result of the very short half life of Ki67 there are usually numerous fragments visible on western blots running below the major 395 kDa and 345 kDa bands.
Disclaimer:	This product is for research use only. It is not intended for diagnostic or therapeutic use.

Anti-Ki67 Antibody (A104340)

Images:



Immunofluorescent analysis of HeLa cells stained with Anti-Ki67 Antibody (1:2,000 | red), and Anti-beta Tubulin Antibody (1:5,000 | green). The blue is DAPI staining of nuclear DNA. The Anti-Ki67 Antibody detects Ki67 protein predominantly expressed in nucleoli of cells in interphase and in mitotic cells Ki67 forms a coat around condensed chromosomes. Ki67 is not detected in cells in the quiescent G0 state. The Anti-beta Tubulin Antibody produces strong staining of cytoplasmic microtubules



Western blot analysis of equal amounts of cell lysates probed with Anti-Ki67 Antibody (1:5,000 | green): [1] protein standard (red), [2] rapidly dividing HeLa cell cultures, [3] rapidly dividing HEK293 cell cultures. Strong double bands above 250kDa correspond to the two major Ki67 isoforms of molecular weight 345kDa and 395kDa. Since Ki67 is a rather unstable short half life protein multiple proteolytic fragments of the two isoforms are also detected on the blot.