

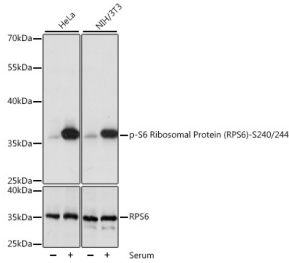
Anti-RPS6 (phospho Ser240 + Ser244) Antibody (A11015)

Specifications:

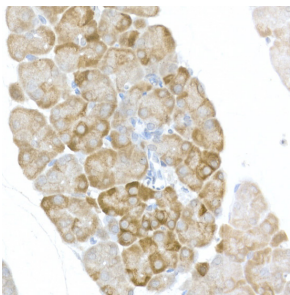
Name:	Anti-RPS6 (phospho Ser240 + Ser244) Antibody
Description:	Rabbit polyclonal antibody to RPS6 (phospho Ser240 + Ser244).
Applications:	WB, IHC, IP
Recommended Dilutions:	WB: 1:500-1:2,000, IHC: 1:50-1:200, IP: 1:50-1:100
Reactivity:	Human, Mouse, Rat
Immunogen:	A synthetic phosphorylated peptide around S240 & S244 of human RPS6 (NP_001001.2).
Sequence:	STSKS
Host:	Rabbit
Clonality:	Polyclonal
Isotype:	IgG
Conjugate:	Unconjugated
Purification:	Affinity purification.
Molecular Weight:	36 kDa
Product Form:	Liquid
Formulation:	Supplied in Phosphate Buffered Saline, pH 7.3, with 50% Glycerol and 0.02% Sodium Azide.
Storage:	Shipped at 4°C. Upon delivery aliquot and store at -20°C. Avoid freeze / thaw cycles.
Disclaimer:	This product is for research use only. It is not intended for diagnostic or therapeutic use.

Anti-RPS6 (phospho Ser240 + Ser244) Antibody (A11015)

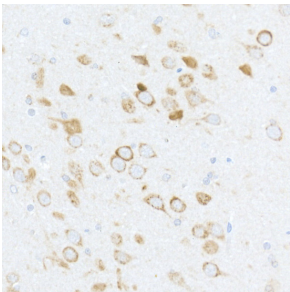
Images:



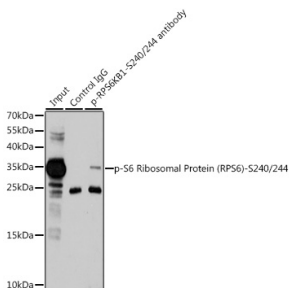
Western blot analysis of extracts of various cell lines, using Anti-RPS6 (phospho Ser240 + Ser244) Antibody (A11015) at 1:1,000 dilution or RPS6 antibody (A6058). HeLa cells were treated by 10% FBS at 37°C for 30 minutes after serum-starvation overnight. NIH/3T3 cells were treated by 10% FBS at 37°C for 30 minutes after serum-starvation overnight. The secondary antibody was Goat Anti-Rabbit IgG H&L Antibody (HRP) at 1:10,000 dilution. Lysates/proteins were present at 25µg per lane. The blocking buffer used was 3% BSA. Detection was with a ECL Basic Kit. Exposure time: 1s.



Immunohistochemistry analysis of paraffin-embedded mouse pancreas using Anti-RPS6 (phospho Ser240 + Ser244) Antibody (A11015) at a dilution of 1:50 (40x lens). Perform high pressure antigen retrieval with 10 mM citrate buffer pH 6.0 before commencing with IHC staining protocol.



Immunohistochemistry analysis of paraffin-embedded rat brain using Anti-RPS6 (phospho Ser240 + Ser244) Antibody (A11015) at a dilution of 1:50 (40x lens). Perform high pressure antigen retrieval with 10 mM citrate buffer pH 6.0 before commencing with IHC staining protocol.



Immunoprecipitation analysis of 200µg extracts of 293T cells using 3µg of Anti-RPS6 (phospho Ser240 + Ser244) Antibody (A11015). This Western blot was performed on the immunoprecipitate using Anti-RPS6 (phospho Ser240 + Ser244) Antibody (A11015) at a dilution of 1:1000. 293T cells were treated by PMA/TPA (200 nM) at 37°C for 30 minutes after serum-starvation overnight.