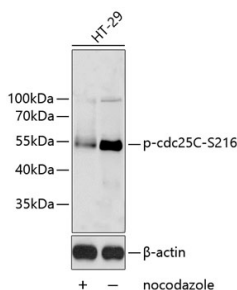


## Anti-Cdc25C (phospho Ser216) Antibody (A11055)

### Specifications:

Name:	Anti-Cdc25C (phospho Ser216) Antibody
Description:	Rabbit polyclonal antibody to Cdc25C (phospho Ser216).
Applications:	WB, IHC
Recommended Dilutions:	WB: 1:500-1:2,000, IHC: 1:50-1:200
Reactivity:	Human, Rat
Immunogen:	A synthetic phosphorylated peptide around S216 of human cdc25C (NP_001781.2).
Sequence:	SPSMP
Host:	Rabbit
Clonality:	Polyclonal
Isotype:	IgG
Conjugate:	Unconjugated
Purification:	Affinity purification.
Molecular Weight:	53 kDa
Product Form:	Liquid
Formulation:	Supplied in Phosphate Buffered Saline, pH 7.3, with 50% Glycerol and 0.01% Thiomersal.
Storage:	Shipped at 4°C. Upon delivery aliquot and store at -20°C. Avoid freeze / thaw cycles.
Disclaimer:	This product is for research use only. It is not intended for diagnostic or therapeutic use.

### Images:



Western blot analysis of extracts of HT-29 cells, using Anti-Cdc25C (phospho Ser216) Antibody (A11055). The secondary antibody was Goat Anti-Rabbit IgG H&L Antibody (HRP) at 1:10,000 dilution. Lysates/proteins were present at 25µg per lane. The blocking buffer used was 3% BSA.