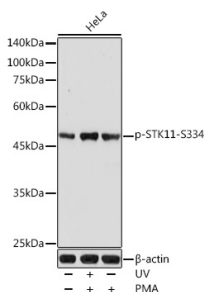


Anti-LKB1 (phospho Ser334) Antibody (A11077)

Specifications:

Name:	Anti-LKB1 (phospho Ser334) Antibody
Description:	Rabbit polyclonal antibody to LKB1 (phospho Ser334).
Applications:	WB
Recommended Dilutions:	WB: 1:500-1:1,000
Reactivity:	Human, Mouse, Rat
Immunogen:	A synthetic phosphorylated peptide around S334 of human STK11 (NP_000446.1).
Sequence:	WRSMT
Host:	Rabbit
Clonality:	Polyclonal
Isotype:	IgG
Conjugate:	Unconjugated
Purification:	Affinity purification.
Molecular Weight:	54 kDa
Product Form:	Liquid
Formulation:	Supplied in Phosphate Buffered Saline, pH 7.3, with 50% Glycerol and 0.02% Sodium Azide.
Storage:	Shipped at 4°C. Upon delivery aliquot and store at -20°C. Avoid freeze / thaw cycles.
Disclaimer:	This product is for research use only. It is not intended for diagnostic or therapeutic use.

Images:



Western blot analysis of extracts of HeLa cells, using Anti-LKB1 (phospho Ser334) Antibody (A11077) at 1:1,000 dilution. HeLa cells were treated by UV at room temperature for 30 minutes and PMA (200 nM) at 37°C for 30 minutes after serum-starvation. The secondary antibody was Goat Anti-Rabbit IgG H&L Antibody (HRP) at 1:10,000 dilution. Lysates/proteins were present at 25µg per lane. The blocking buffer used was 3% non-fat dry milk in TBST. Detection was with a ECL Basic Kit. Exposure time: 180s.