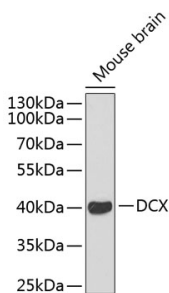


Anti-Doublecortin Antibody (A11118)

Specifications:

Name:	Anti-Doublecortin Antibody
Description:	Rabbit polyclonal antibody to Doublecortin.
Applications:	WB, ICC/IF
Recommended Dilutions:	WB: 1:500-1:1,000, ICC/IF: 1:50-1:200
Reactivity:	Human, Mouse
Immunogen:	Recombinant fusion protein containing a sequence corresponding to amino acids 265-365 of human Doublecortin (NP_835365.1).
Sequence:	SLDENECRVMKGNPSATAGPKASPTPQKTSKSPGPMRRSKSPADSGNDQDANGTSSS QLSTPKSKQSPISTPTSPGSLRKHKDLYLPLSLDDSDSLGDSM
Host:	Rabbit
Clonality:	Polyclonal
Isotype:	IgG
Conjugate:	Unconjugated
Purification:	Affinity purification.
Molecular Weight:	41 kDa
Product Form:	Liquid
Formulation:	Supplied in Phosphate Buffered Saline, pH 7.3, with 50% Glycerol and 0.05% Proclin 300.
Storage:	Shipped at 4°C. Upon delivery aliquot and store at -20°C. Avoid freeze / thaw cycles.
Disclaimer:	This product is for research use only. It is not intended for diagnostic or therapeutic use.

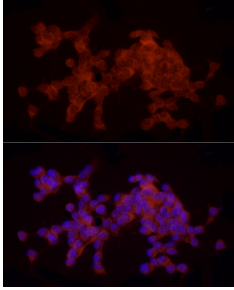
Images:



Western blot analysis of extracts of mouse brain, using Anti-Doublecortin Antibody (A11118). The secondary antibody was Goat Anti-Rabbit IgG H&L Antibody (HRP) at 1:10,000 dilution. Lysates/proteins were present at 25µg per lane. The blocking buffer used was 3% non-fat dry milk in TBST.

Anti-Doublecortin Antibody (A11118)

Images continued:



Immunofluorescence analysis of SH-5Y5Y cells using Anti-Doublecortin Antibody (A11118) at a dilution of 1:20 (40x lens). DAPI was used to stain the cell nuclei (blue).