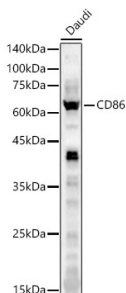


## Anti-CD86 Antibody (A11426)

### Specifications:

Name:	Anti-CD86 Antibody
Description:	Rabbit polyclonal antibody to CD86.
Applications:	WB, ICC/IF
Recommended Dilutions:	WB: 1:500-1:1,000, ICC/IF: 1:50-1:200
Reactivity:	Human, Mouse, Rat
Immunogen:	Recombinant fusion protein containing a sequence corresponding to amino acids 25-133 of human CD86 (NP_787058.4).
Sequence:	PLKIQAYFNETADLPCQFANSQNSLSSELVVFWQDQENLVLNEVYLGKEKFDSVHSKY MGRTSFDSDSWTLRLHNLQIKDKGLYQCIHHKKPTGMIRIHQMNSELSVL
Host:	Rabbit
Clonality:	Polyclonal
Isotype:	IgG
Conjugate:	Unconjugated
Purification:	Affinity purification.
Molecular Weight:	60 kDa
Product Form:	Liquid
Formulation:	Supplied in Phosphate Buffered Saline, pH 7.3, with 50% Glycerol and 0.05% Proclin 300.
Storage:	Shipped at 4°C. Upon delivery aliquot and store at -20°C. Avoid freeze / thaw cycles.
Disclaimer:	This product is for research use only. It is not intended for diagnostic or therapeutic use.

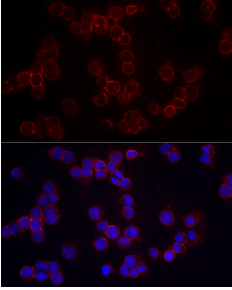
### Images:



Western blot analysis of Daudi, using Anti-CD86 Antibody (A11426) at 1:2,000 dilution. The secondary antibody was Goat Anti-Rabbit IgG H&L Antibody (HRP) at 1:10,000 dilution. Lysates/proteins were present at 25µg per lane. The blocking buffer used was 3% non-fat dry milk in TBST. Detection was with a ECL Basic Kit. Exposure time: 180s.

## Anti-CD86 Antibody (A11426)

Images continued:



Immunofluorescence analysis of Raji cells using Anti-CD86 Antibody (A11426) at a dilution of 1:200 (40x lens). DAPI was used to stain the cell nuclei (blue).