

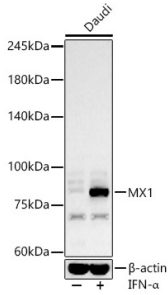
## Anti-MX1 Antibody (A11481)

### Specifications:

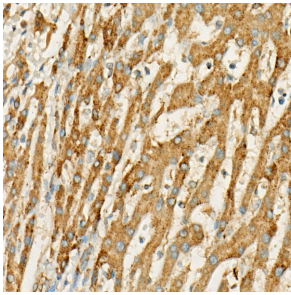
Name:	Anti-MX1 Antibody
Description:	Rabbit polyclonal antibody to MX1.
Applications:	WB, IHC, ICC/IF
Recommended Dilutions:	WB: 1:500-1:1,000, IHC: 1:50-1:200, ICC/IF: 1:50-1:200
Reactivity:	Human, Mouse
Immunogen:	Recombinant fusion protein containing a sequence corresponding to amino acids 368-662 of human MX1 (NP_001171517.1).
Sequence:	ENEKMFFLIDKVNAFNQDITALMQGEETVGEEDIRLFTRLRHEFHKWSTIIENNFQEG HKILSRKIQKFENQYRGRELPGFVNYRTFETIVKQQIKALEEPAVDMLHTVTDMLVRLA FTDVSIKNFEEFFNLHRTAKSKIEDIRAEQEREKEKLIRLHFQMEQIVYCQDQVYRGA LQKVREKELEEEKKKSWDFGAFQSSSATDSSMEEIFQHLMAYHQEASKRISSHIPLI IQFFMLQTYGQQLQKAMLQLLQDKDTYSWLLKERSDTS DKRKFLKERLARLTQARRRL AQFPG
Host:	Rabbit
Clonality:	Polyclonal
Isotype:	IgG
Conjugate:	Unconjugated
Purification:	Affinity purification.
Molecular Weight:	76 kDa
Product Form:	Liquid
Formulation:	Supplied in Phosphate Buffered Saline, pH 7.3, with 50% Glycerol and 0.05% Proclin 300.
Storage:	Shipped at 4°C. Upon delivery aliquot and store at -20°C. Avoid freeze / thaw cycles.
Disclaimer:	This product is for research use only. It is not intended for diagnostic or therapeutic use.

## Anti-MX1 Antibody (A11481)

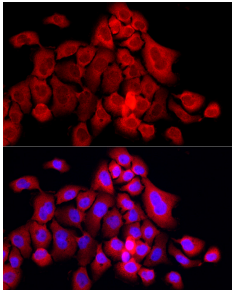
### Images:



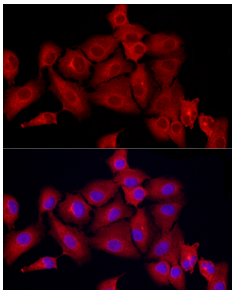
Western blot analysis of Daudi, using Anti-MX1 Antibody (A11481) at 1:600 dilution. Daudi cells were treated by IFN-alpha (100 ng/ml) at 37°C for 30 minutes after serum-starvation overnight. The secondary antibody was Goat Anti-Rabbit IgG H&L Antibody (HRP) at 1:10,000 dilution. Lysates/proteins were present at 25µg per lane. The blocking buffer used was 3% non-fat dry milk in TBST. Detection was with a ECL Basic Kit. Exposure time: 60s.



Immunohistochemistry analysis of paraffin-embedded human liver cancer using Anti-MX1 Antibody (A11481) at a dilution of 1:50 (40x lens). Perform high pressure antigen retrieval with 10 mM citrate buffer pH 6.0 before commencing with IHC staining protocol.



Immunofluorescence analysis of A431 cells using Anti-MX1 Antibody (A11481) at a dilution of 1:50 (40x lens). DAPI was used to stain the cell nuclei (blue).



Immunofluorescence analysis of A-549 cells using Anti-MX1 Antibody (A11481) at a dilution of 1:50 (40x lens). DAPI was used to stain the cell nuclei (blue).