

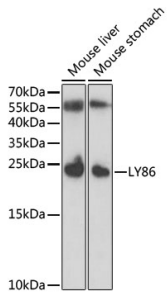
## Anti-MD1 Antibody (A11930)

### Specifications:

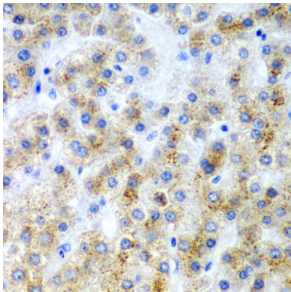
Name:	Anti-MD1 Antibody
Description:	Rabbit polyclonal antibody to MD1.
Applications:	WB, IHC
Recommended Dilutions:	WB: 1:500-1:2,000, IHC: 1:50-1:200
Reactivity:	Human, Mouse
Immunogen:	Recombinant fusion protein containing a sequence corresponding to amino acids 21-162 of human LY86 (NP_004262.1).
Sequence:	GGGGKAWPTHVVCSDSGLEVLYQSCDPLQDFGFSVEKCSKQLKSNINIRFGIILREDI KELFLDLALMSQGSSVLNFSYPICEAALPKFSFCGRRKGEQIYYAGPVNNPEFTIPQG EYQVLLELYTEKRSTVACANATIMCS
Host:	Rabbit
Clonality:	Polyclonal
Isotype:	IgG
Conjugate:	Unconjugated
Purification:	Affinity purification.
Molecular Weight:	24 kDa
Product Form:	Liquid
Formulation:	Supplied in Phosphate Buffered Saline, pH 7.3, with 50% Glycerol and 0.02% Sodium Azide.
Storage:	Shipped at 4°C. Upon delivery aliquot and store at -20°C. Avoid freeze / thaw cycles.
Disclaimer:	This product is for research use only. It is not intended for diagnostic or therapeutic use.

## Anti-MD1 Antibody (A11930)

### Images:



Western blot analysis of extracts of various cell lines, using Anti-MD1 Antibody (A11930) at 1:1,000 dilution. The secondary antibody was Goat Anti-Rabbit IgG H&L Antibody (HRP) at 1:10,000 dilution. Lysates/proteins were present at 25µg per lane. The blocking buffer used was 3% non-fat dry milk in TBST.



Immunohistochemistry analysis of paraffin-embedded human liver cancer using Anti-MD1 Antibody (A11930) at a dilution of 1:200 (40x lens). Perform microwave antigen retrieval with 10 mM PBS buffer pH 7.2 before commencing with IHC staining protocol.