

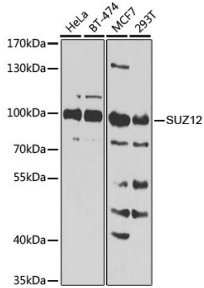
Anti-SUZ12 Antibody (A12169)

Specifications:

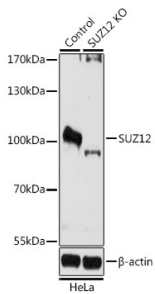
Name:	Anti-SUZ12 Antibody
Description:	Rabbit polyclonal antibody to SUZ12.
Applications:	WB, ICC/IF, IP
Recommended Dilutions:	WB: 1:500-1:2,000, ICC/IF: 1:50-1:100, IP: 1:50-1:100
Reactivity:	Human, Mouse, Rat
Immunogen:	Recombinant fusion protein containing a sequence corresponding to amino acids 470-739 of human SUZ12 (NP_056170.2).
Sequence:	CHSRFIFNYVYHPKGARIDVSINECYDGSYAGNPQDIHRQPGFAFSRNGPVK RTPITH ILVCRPKRTKASMSEFLESEEDGEVEQQRTYSSGHNRLYFHSDTCLPLRPQEMEVDSED EKDPEWLREKTITQIEEFSDVNEGEKEVMKLNHLHVMKHGFIADNQMNHACMLFVENY GQKIIKKNLCRNFMLHLVSMHDFNLISIMSIDKAVTKLREMQQKLEKGESASPANEEI TEEQNGTANGFSEINSKEKALETDSVSGVSKQSKKQKL
Host:	Rabbit
Clonality:	Polyclonal
Isotype:	IgG
Conjugate:	Unconjugated
Purification:	Affinity purification.
Molecular Weight:	83 kDa
Product Form:	Liquid
Formulation:	Supplied in Phosphate Buffered Saline, pH 7.3, with 50% Glycerol and 0.02% Sodium Azide.
Storage:	Shipped at 4°C. Upon delivery aliquot and store at -20°C. Avoid freeze / thaw cycles.
Disclaimer:	This product is for research use only. It is not intended for diagnostic or therapeutic use.

Anti-SUZ12 Antibody (A12169)

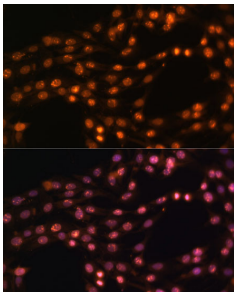
Images:



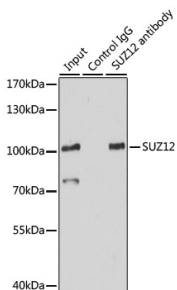
Western blot analysis of extracts of various cell lines, using Anti-SUZ12 Antibody (A12169) at 1:1,000 dilution. The secondary antibody was Goat Anti-Rabbit IgG H&L Antibody (HRP) at 1:10,000 dilution. Lysates/proteins were present at 25 μ g per lane. The blocking buffer used was 3% non-fat dry milk in TBST. Detection was with a ECL Basic Kit. Exposure time: 90s.



Western blot analysis of extracts from normal (control) and SUZ12 knockout (KO) HeLa cells, using Anti-SUZ12 Antibody (A12169) at 1:1,000 dilution. The secondary antibody was Goat Anti-Rabbit IgG H&L Antibody (HRP) at 1:10,000 dilution. Lysates/proteins were present at 25 μ g per lane. The blocking buffer used was 3% non-fat dry milk in TBST. Detection was with a ECL Basic Kit. Exposure time: 90s.



Immunofluorescence analysis of C6 cells using Anti-SUZ12 Antibody (A12169) at a dilution of 1:100 (40x lens). DAPI was used to stain the cell nuclei (blue).



Immunoprecipitation analysis of 200 μ g extracts of HeLa cells using 3 μ g of Anti-SUZ12 Antibody (A12169). This Western blot was performed on the immunoprecipitate using Anti-SUZ12 Antibody (A12169) at a dilution of 1:500.