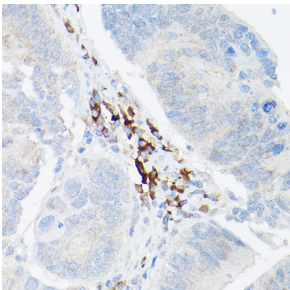


Anti-TNF alpha Antibody (A12596)

Specifications:

Name:	Anti-TNF alpha Antibody
Description:	Rabbit polyclonal antibody to TNF alpha.
Applications:	WB, IHC, ICC/IF
Recommended Dilutions:	WB: 1:500-1:2,000, IHC: 1:50-1:200, ICC/IF: 1:50-1:200
Reactivity:	Human, Mouse, Rat
Immunogen:	A synthetic peptide corresponding to a sequence within amino acids 1-100 of human TNF (NP_000585.2).
Sequence:	MSTEMIRDVELAEEALPKKTGGPQGSRRCLFSLFSFLIVAGATTLFCLLHFGVIGP QREEFPRDLSLISPLAQAVRSSSRTPSDKPVAVHVVANPQAEG
Host:	Rabbit
Clonality:	Polyclonal
Isotype:	IgG
Conjugate:	Unconjugated
Purification:	Affinity purification.
Product Form:	Liquid
Formulation:	Supplied in Phosphate Buffered Saline, pH 7.3, with 50% Glycerol and 0.05% Proclin 300.
Storage:	Shipped at 4°C. Upon delivery aliquot and store at -20°C. Avoid freeze / thaw cycles.
Disclaimer:	This product is for research use only. It is not intended for diagnostic or therapeutic use.

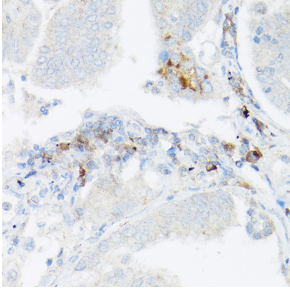
Images:



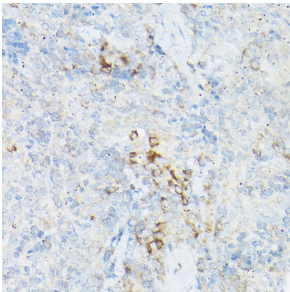
Immunohistochemistry analysis of paraffin-embedded human colon carcinoma tissue using Anti-TNF alpha Antibody (A12596) at a dilution of 1:20 (40x lens). Perform high pressure antigen retrieval with 10 mM citrate buffer pH 6.0 before commencing with IHC staining protocol.

Anti-TNF alpha Antibody (A12596)

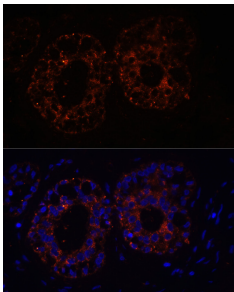
Images continued:



Immunohistochemistry analysis of paraffin-embedded human lung cancer using Anti-TNF alpha Antibody (A12596) at a dilution of 1:20 (40x lens). Perform high pressure antigen retrieval with 10 mM citrate buffer pH 6.0 before commencing with IHC staining protocol.



Immunohistochemistry analysis of paraffin-embedded rat spleen using Anti-TNF alpha Antibody (A12596) at a dilution of 1:20 (40x lens). Perform high pressure antigen retrieval with 10 mM citrate buffer pH 6.0 before commencing with IHC staining protocol.



Immunofluorescence analysis of human mammary cancer cells using Anti-TNF alpha Antibody (A12596) at a dilution of 1:100. DAPI was used to stain the cell nuclei (blue).