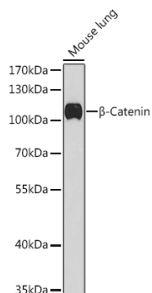


# Anti-beta Catenin Antibody (A12611)

## Specifications:

Name:	Anti-beta Catenin Antibody
Description:	Rabbit polyclonal antibody to beta Catenin.
Applications:	WB, IHC, IP
Recommended Dilutions:	WB: 1:500-1:1,000, IHC: 1:50-1:200, IP: 1:500-1:1,000
Reactivity:	Human, Mouse
Immunogen:	A synthetic peptide corresponding to a sequence within amino acids 650-750 of human $\beta$ -Catenin (NP_001895.1).
Sequence:	GVATYAAAVLFRMSEDKPQDYKKRLSVELTSSLFRTEPMAWNETADLGLDIGAQGEPL GYRQDDPSYRSFHSGGYGQDALGMDPMMEHEMGGHHPGADYPV
Host:	Rabbit
Clonality:	Polyclonal
Isotype:	IgG
Conjugate:	Unconjugated
Purification:	Affinity purification.
Molecular Weight:	100 kDa
Product Form:	Liquid
Formulation:	Supplied in Phosphate Buffered Saline, pH 7.3, with 50% Glycerol and 0.02% Sodium Azide.
Storage:	Shipped at 4°C. Upon delivery aliquot and store at -20°C. Avoid freeze / thaw cycles.
Disclaimer:	This product is for research use only. It is not intended for diagnostic or therapeutic use.

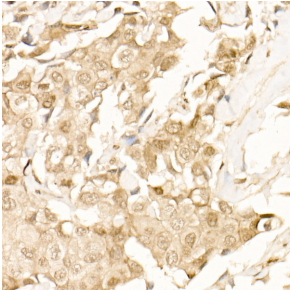
## Images:



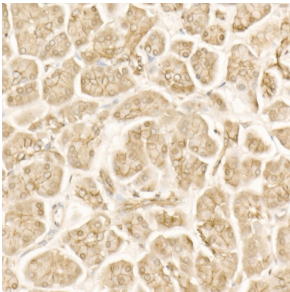
Western blot analysis of extracts of Mouse lung, using Anti-beta Catenin Antibody (A12611) at 1:1,000 dilution. The secondary antibody was Goat Anti-Rabbit IgG H&L Antibody (HRP) at 1:10,000 dilution. Lysates/proteins were present at 25 $\mu$ g per lane. The blocking buffer used was 3% non-fat dry milk in TBST. Detection was with a ECL Basic Kit. Exposure time: 90s.

## Anti-beta Catenin Antibody (A12611)

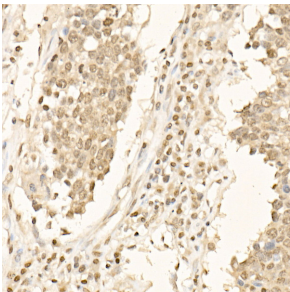
Images continued:



Immunohistochemistry analysis of paraffin-embedded human breast cancer tissue using Anti-beta Catenin Antibody (A12611) at dilution of 20 (40x lens). Perform high pressure antigen retrieval with 10 mM citrate buffer pH 6.0 before commencing with IHC staining protocol.



Immunohistochemistry analysis of paraffin-embedded human pancreas using Anti-beta Catenin Antibody (A12611) at dilution of 20 (40x lens). Perform high pressure antigen retrieval with 10 mM citrate buffer pH 6.0 before commencing with IHC staining protocol.



Immunohistochemistry analysis of paraffin-embedded human small cell lung cancer using Anti-beta Catenin Antibody (A12611) at dilution of 20 (40x lens). Perform high pressure antigen retrieval with 10 mM citrate buffer pH 6.0 before commencing with IHC staining protocol.