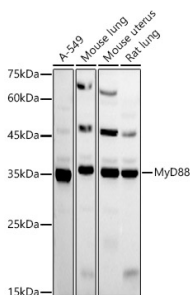


Anti-MyD88 Antibody (A12738)

Specifications:

Name:	Anti-MyD88 Antibody
Description:	Rabbit polyclonal antibody to MyD88.
Applications:	WB, ICC/IF
Recommended Dilutions:	WB: 1:100-1:500, ICC/IF: 1:50-1:200
Reactivity:	Human, Mouse, Rat
Immunogen:	A synthetic peptide corresponding to a sequence within amino acids 50-150 of human MyD88 (NP_001166038.2).
Sequence:	LAEEMDFEYLEIRQLETQADPTGRLLDAWQGRPGASVGRILLELLTKLGRDDVLLLELGP SIEEDCQKYILKQQQEEAEKPLQVAAVDSSVPRTAELAGITTL
Host:	Rabbit
Clonality:	Polyclonal
Isotype:	IgG
Conjugate:	Unconjugated
Purification:	Affinity purification.
Molecular Weight:	33 kDa
Product Form:	Liquid
Formulation:	Supplied in Phosphate Buffered Saline, pH 7.3, with 50% Glycerol and 0.01% Thiomersal.
Storage:	Shipped at 4°C. Upon delivery aliquot and store at -20°C. Avoid freeze / thaw cycles.
Disclaimer:	This product is for research use only. It is not intended for diagnostic or therapeutic use.

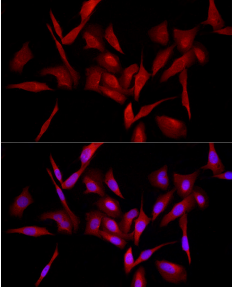
Images:



Western blot analysis of extracts of various cell lines, using Anti-MyD88 Antibody (A12738) at 1:500 dilution. The secondary antibody was Goat Anti-Rabbit IgG H&L Antibody (HRP) at 1:10,000 dilution. Lysates/proteins were present at 25µg per lane. The blocking buffer used was 3% non-fat dry milk in TBST. Detection was with a ECL Basic Kit. Exposure time: 90s.

Anti-MyD88 Antibody (A12738)

Images continued:



Immunofluorescence analysis of U2OS cells using Anti-MyD88 Antibody (A12738) at a dilution of 1:100 (40x lens). DAPI was used to stain the cell nuclei (blue).