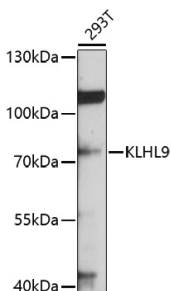


## Anti-KLHL9 Antibody (A12811)

### Specifications:

Name:	Anti-KLHL9 Antibody
Description:	Rabbit polyclonal antibody to KLHL9.
Applications:	WB, IHC
Recommended Dilutions:	WB: 1:500-1:2,000, IHC: 1:50-1:200
Reactivity:	Human, Mouse, Rat
Immunogen:	Recombinant fusion protein containing a sequence corresponding to amino acids 1-100 of human KLHL9 (NP_061335.1).
Sequence:	MKVSLGNGEMGVSAHLQPCKAGTTRFFTSNTHSSVVLQGFDQLRIEGLLCDVTLVPGD GDEIFPVHRAMMASASYFKAMFTGGMKEQDLMCIKLHGVNK
Host:	Rabbit
Clonality:	Polyclonal
Isotype:	IgG
Conjugate:	Unconjugated
Purification:	Affinity purification.
Molecular Weight:	75 kDa
Product Form:	Liquid
Formulation:	Supplied in Phosphate Buffered Saline, pH 7.3, with 50% Glycerol and 0.02% Sodium Azide.
Storage:	Shipped at 4°C. Upon delivery aliquot and store at -20°C. Avoid freeze / thaw cycles.
Disclaimer:	This product is for research use only. It is not intended for diagnostic or therapeutic use.

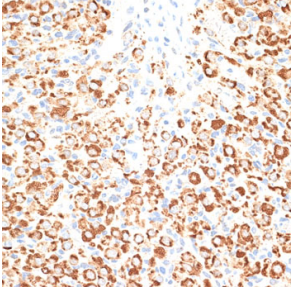
### Images:



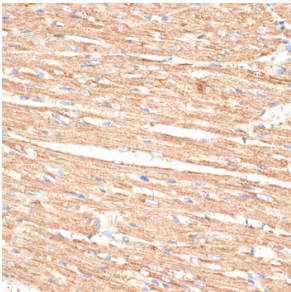
Western blot analysis of extracts of 293T cells, using Anti-KLHL9 Antibody (A12811) at 1:1,000 dilution. The secondary antibody was Goat Anti-Rabbit IgG H&L Antibody (HRP) at 1:10,000 dilution. Lysates/proteins were present at 25 $\mu$ g per lane. The blocking buffer used was 3% non-fat dry milk in TBST. Detection was with a ECL Basic Kit. Exposure time: 30s.

## Anti-KLHL9 Antibody (A12811)

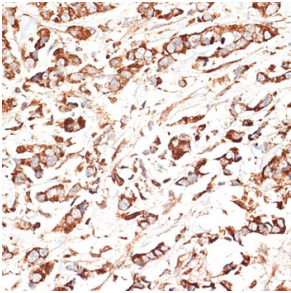
Images continued:



Immunohistochemistry analysis of paraffin-embedded rat ovary using Anti-KLHL9 Antibody (A12811) at a dilution of 1:100 (40x lens).



Immunohistochemistry analysis of paraffin-embedded rat heart using Anti-KLHL9 Antibody (A12811) at a dilution of 1:100 (40x lens).



Immunohistochemistry analysis of paraffin-embedded human breast cancer tissue using Anti-KLHL9 Antibody (A12811) at a dilution of 1:100 (40x lens).