

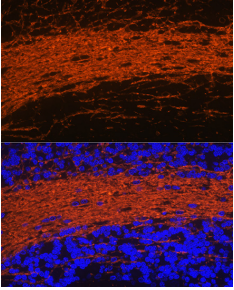
Anti-CNPase Antibody (A12825)

Specifications:

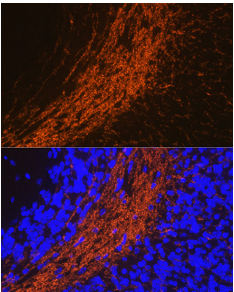
Name:	Anti-CNPase Antibody
Description:	Rabbit polyclonal antibody to CNPase.
Applications:	WB, IHC, ICC/IF
Recommended Dilutions:	WB: 1:500-1:2,000, IHC: 1:50-1:200, ICC/IF: 1:50-1:200
Reactivity:	Human, Mouse, Rat
Immunogen:	Recombinant fusion protein containing a sequence corresponding to amino acids 150-421 of human CNPasease (NP_149124.3).
Sequence:	PKTAWRLDCAQLKEKNQWQLSADDLKKLKPGLKDFLPLYFGWFLTKKSSETLRKAGQ VFLEELGNHKAFKKELRQFVPGDEPREKMDLVTYFGKRPPGVLHCTTKFCDYGKAPGA EEYAQQDVLKKSYSKAFTLTISALFVTPKTTGARVELSEQQQLWPSDVKLSPTDNL PRGSRAHITLGCAADVEAVQTGLDLLEILRQEKGGSRGEEVGEISRGKLYSLGNRWM LTLAKNMEVRAIFTGYGKGPVPTQGSRKGGALQSCTII
Host:	Rabbit
Clonality:	Polyclonal
Isotype:	IgG
Conjugate:	Unconjugated
Purification:	Affinity purification.
Molecular Weight:	48 kDa
Product Form:	Liquid
Formulation:	Supplied in Phosphate Buffered Saline, pH 7.3, with 50% Glycerol and 0.01% Thiomersal.
Storage:	Shipped at 4°C. Upon delivery aliquot and store at -20°C. Avoid freeze / thaw cycles.
Disclaimer:	This product is for research use only. It is not intended for diagnostic or therapeutic use.

Anti-CNPase Antibody (A12825)

Images:



Immunofluorescence analysis of rat brain using Anti-CNPase Antibody (A12825) at a dilution of 1:100 (40x lens). DAPI was used to stain the cell nuclei (blue).



Immunofluorescence analysis of mouse brain using Anti-CNPase Antibody (A12825) at a dilution of 1:100 (40x lens). DAPI was used to stain the cell nuclei (blue).