

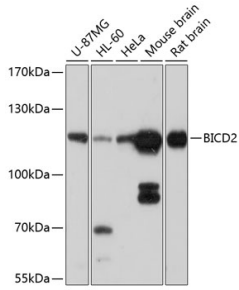
## Anti-BICD2 Antibody (A12879)

### Specifications:

Name:	Anti-BICD2 Antibody
Description:	Rabbit polyclonal antibody to BICD2.
Applications:	WB
Recommended Dilutions:	WB: 1:1,000-1:2,000
Reactivity:	Human, Mouse, Rat
Immunogen:	Recombinant fusion protein containing a sequence corresponding to amino acids 440-620 of human BICD2 (NP_001003800.1).
Sequence:	HVAVAEAGELREQLKALRSTHEAREAQAEEKGRYEAEGQALTEKVSILLEKASRQDRE LLARLEKELKKVSDVAGETQGSLVAQDELVTFSEELANLYHHVCMCNNETPNRVMLD YYREGQGGAGRTSPGGRTSPEARGRRSPILLPKGLLAPEAGRADGGTGDSSPSPGSSL PSPLSDP
Host:	Rabbit
Clonality:	Polyclonal
Isotype:	IgG
Conjugate:	Unconjugated
Purification:	Affinity purification.
Molecular Weight:	118 kDa
Product Form:	Liquid
Formulation:	Supplied in Phosphate Buffered Saline, pH 7.3, with 50% Glycerol and 0.02% Sodium Azide.
Storage:	Shipped at 4°C. Upon delivery aliquot and store at -20°C. Avoid freeze / thaw cycles.
Disclaimer:	This product is for research use only. It is not intended for diagnostic or therapeutic use.

## Anti-BICD2 Antibody (A12879)

### Images:



Western blot analysis of extracts of various cell lines, using Anti-BICD2 Antibody (A12879) at 1:1,000 dilution. The secondary antibody was Goat Anti-Rabbit IgG H&L Antibody (HRP) at 1:10,000 dilution. Lysates/proteins were present at 25 $\mu$ g per lane. The blocking buffer used was 3% non-fat dry milk in TBST. Detection was with a ECL Basic Kit. Exposure time: 30s.