

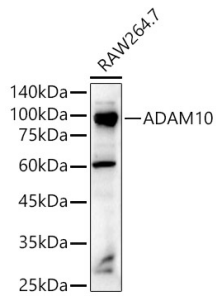
Anti-ADAM10 Antibody (A12938)

Specifications:

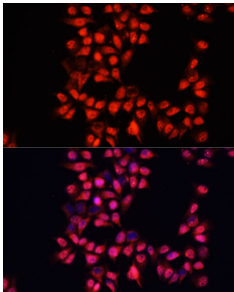
Name:	Anti-ADAM10 Antibody
Description:	Rabbit polyclonal antibody to ADAM10.
Applications:	WB, ICC/IF
Recommended Dilutions:	WB: 1:500-1:1,000, ICC/IF: 1:50-1:200
Reactivity:	Human, Mouse, Rat
Immunogen:	Recombinant fusion protein containing a sequence corresponding to amino acids 214-500 of human ADAM10 (NP_001101.1).
Sequence:	TTSAEKNTCQLYIQTDHLFFKYYGTREAVIAQISSHVKAIDTIYQTDFSGIRNISFM VKRIRINTTADEKDPTNPFRFPNIGVEKFLELNSEQNHDDYCLAYVFTDRDFDDGVLG LAWVGAPSGSSGGICEKSKLYSDGKKKSLNTGIITVQNYGSHVPPKVSHITFAHEVGH NFGSPHDSGTECTPGESKNLGQKENGNYIMYARATSGDKLNNNKFSLCSIRNISQVLE KKRNNCFVESGQPICGNGMVEQGEECDGYSQCKDECCFDANQPEGRKCKLKPG
Host:	Rabbit
Clonality:	Polyclonal
Isotype:	IgG
Conjugate:	Unconjugated
Purification:	Affinity purification.
Molecular Weight:	90 kDa
Product Form:	Liquid
Formulation:	Supplied in Phosphate Buffered Saline, pH 7.3, with 50% Glycerol and 0.05% Proclin 300.
Storage:	Shipped at 4°C. Upon delivery aliquot and store at -20°C. Avoid freeze / thaw cycles.
Disclaimer:	This product is for research use only. It is not intended for diagnostic or therapeutic use.

Anti-ADAM10 Antibody (A12938)

Images:



Western blot analysis of RAW264. 7, using Anti-ADAM10 Antibody (A12938) at 1:1,000 dilution. The secondary antibody was Goat Anti-Rabbit IgG H&L Antibody (HRP) at 1:10,000 dilution. Lysates/proteins were present at 25 μ g per lane. The blocking buffer used was 3% non-fat dry milk in TBST. Detection was with a ECL Enhanced Kit (RM00021). Exposure time: 20s.



Immunofluorescence analysis of HeLa cells using Anti-ADAM10 Antibody (A12938) at a dilution of 1:100. DAPI was used to stain the cell nuclei (blue).