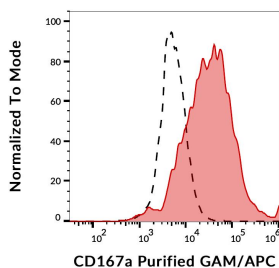


## Anti-CD167a Antibody [51D6] (A121816)

### Specifications:

Name:	Anti-CD167a Antibody [51D6]
Description:	Mouse monoclonal [51D6] antibody to CD167a.
Specificity:	This antibody recognizes an extracellular epitope of CD167a, an approximately 97-101 kDa receptor tyrosine kinase expressed mainly on epithelial cells, but also on B cells and dendritic cells.
Applications:	Flow Cytometry, IP
Recommended Dilutions:	Flow Cytometry: 1-4 µg/ml
Reactivity:	Human
Immunogen:	CD167a transfected NIH-3T3 cells.
Host:	Mouse
Clonality:	Monoclonal
Clone ID:	51D6
Isotype:	IgM
Conjugate:	Unconjugated
Purification:	Protein A chromatography.
Concentration:	1 mg/ml
Product Form:	Liquid
Formulation:	Supplied in Tris Buffered Saline with 15 mM Sodium Azide.
Storage:	Shipped at 4°C. Upon delivery aliquot and store at -20°C. Avoid freeze / thaw cycles.
Disclaimer:	This product is for research use only. It is not intended for diagnostic or therapeutic use.

### Images:



Flow cytometric analysis of MCF-7 cell line stained with Anti-CD167a Antibody [51D6], GAM-APC (red), in comparison with FMO (fluorescence minus one) sample (black-dashed).