

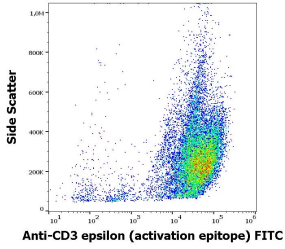
Anti-CD3 epsilon Antibody [APA1/1] (FITC) (A121837)

Specifications:

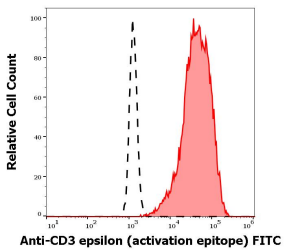
Name:	Anti-CD3 epsilon Antibody [APA1/1] (FITC)
Description:	Mouse monoclonal [APA1/1] antibody to CD3 epsilon (FITC).
Specificity:	This antibody recognizes an activation-dependent intracellular epitope of CD3 epsilon. Exposure of the epitope precedes CD3 phosphorylation and the recruitment and activation of ZAP70, which initiates the signaling cascade produced by T-cell activation. This antibody provides the earliest known marker for TCR-mediated T cell activation.
Applications:	Flow Cytometry
Recommended Dilutions:	Flow Cytometry: 1 µg/ml
Reactivity:	Mouse, Human
Immunogen:	Human CD3 proteins isolated and purified from thymus.
Host:	Mouse
Clonality:	Monoclonal
Clone ID:	APA1/1
Isotype:	IgG1
Conjugate:	FITC
Purification:	This antibody is conjugated with FITC under optimum conditions. The conjugate is purified by size-exclusion chromatography.
Concentration:	0.1 mg/ml
Product Form:	Liquid
Formulation:	Supplied in Phosphate Buffered Saline with 15 mM Sodium Azide.
Storage:	Store in the dark at 2-8°C. Do not freeze!
Disclaimer:	This product is for research use only. It is not intended for diagnostic or therapeutic use.

Anti-CD3 epsilon Antibody [APA1/1] (FITC) (A121837)

Images:



Flow cytometric analysis of Jurkat cell suspension using Anti-CD3 epsilon Antibody [APA1/1] (FITC). Concentration in sample is 5µg/ml.



Separation of Jurkat cells (red-filled) from human neutrophil granulocytes (black-dashed) in flow cytometry analysis using Anti-CD3 epsilon Antibody [APA1/1] (FITC). Concentration in sample is 5µg/ml.