

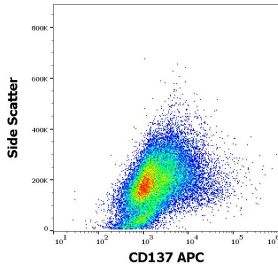
## Anti-CD137 Antibody [4B4-1] (APC) (A121885)

### Specifications:

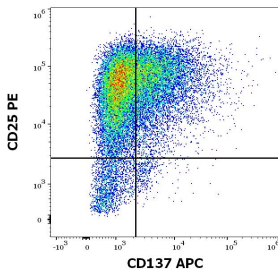
Name:	Anti-CD137 Antibody [4B4-1] (APC)
Description:	Mouse monoclonal [4B4-1] antibody to CD137 (APC).
Specificity:	This antibody recognizes an extracellular conformational epitope on CD137, an approximately 40 kDa type I transmembrane protein of the TNFR family expressed mainly on activated T cells.
Applications:	Flow Cytometry
Recommended Dilutions:	Flow Cytometry: This reagent is designed for analysis of human blood cells using 10 µl reagent / 100 µl of whole blood or 10 <sup>6</sup> cells in a suspension.
Reactivity:	Human, Non-Human Primates
Immunogen:	Recombinant human CD137 ectodomain.
Host:	Mouse
Clonality:	Monoclonal
Clone ID:	4B4-1
Isotype:	IgG1
Light Chains:	kappa
Conjugate:	APC
Purification:	This antibody is conjugated with APC under optimum conditions. The conjugate is purified by size-exclusion chromatography.
Product Form:	Liquid
Formulation:	Supplied in Phosphate Buffered Saline with 15 mM Sodium Azide.
Storage:	Store in the dark at 2-8°C. Do not freeze!
Disclaimer:	This product is for research use only. It is not intended for diagnostic or therapeutic use.

## Anti-CD137 Antibody [4B4-1] (APC) (A121885)

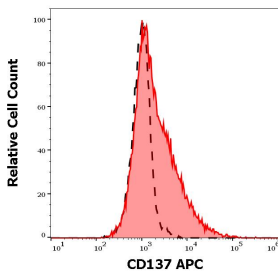
### Images:



Flow cytometric analysis of human PHA stimulated peripheral blood mononuclear cell suspension stained with Anti-CD137 Antibody [4B4-1] (APC) (10 $\mu$ l reagent per milion cells in 100 $\mu$ l of cell suspension).



Flow cytometric analysis of human peripheral blood mononuclear cells stained using Anti-CD137 Antibody [4B4-1] (APC) (10 $\mu$ l reagent per milion cells in 100 $\mu$ l of cell suspension) and Anti-CD25 Antibody [MEM-181] (PE) (20 $\mu$ l reagent per milion cells in 100 $\mu$ l of cell suspension).



Separation of cells stained with Anti-CD137 Antibody [4B4-1] (APC) (10 $\mu$ l reagent per milion cells in 100 $\mu$ l of cell suspension, red-filled) from cells stained with Mouse IgG1 [MOPC-21] (APC) (Isotype Control) (concentration in sample is 1 $\mu$ g/ml, same as Anti-CD137 Antibody [4B4-1] (APC) concentration, black-dashed) in flow cytometry analysis of human PHA stimulated peripheral blood mononuclear cell suspension.