

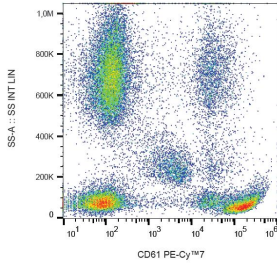
Anti-Integrin beta 3 Antibody [VIPL2] (PE-Cyanine 7) (A122021)

Specifications:

Name:	Anti-Integrin beta 3 Antibody [VIPL2] (PE-Cyanine 7)
Description:	Mouse monoclonal [VIPL2] antibody to Integrin beta 3 (PE-Cyanine 7).
Specificity:	This antibody recognizes an extracellular epitope of CD61, a 90-110 kDa transmembrane glycoprotein of integrin family, expressed on platelets, megacaryocytes, osteoclasts, endothelial cells, and other cell types, including: leucocytes and smooth muscle cells.
Applications:	Flow Cytometry
Recommended Dilutions:	Flow Cytometry: This reagent is designed for analysis of human blood cells using 4 μ l reagent / 100 μ l of whole blood or 10^6 cells in a suspension.
Reactivity:	Human, Non-Human Primates
Immunogen:	Unfortunately, this information is considered to be commercially sensitive.
Host:	Mouse
Clonality:	Monoclonal
Clone ID:	VIPL2
Isotype:	IgG1
Light Chains:	kappa
Conjugate:	PE-Cyanine 7
Purification:	This antibody is conjugated with tandem dye PE-Cyanine 7 under optimum conditions. The conjugate is purified by size-exclusion chromatography.
Product Form:	Liquid
Formulation:	Supplied in Phosphate Buffered Saline with 15 mM Sodium Azide.
Storage:	Store in the dark at 2-8°C. Do not freeze!
Disclaimer:	This product is for research use only. It is not intended for diagnostic or therapeutic use.

Anti-Integrin beta 3 Antibody [VIPL2] (PE-Cyanine 7) (A122021)

Images:



Flow cytometric analysis of human peripheral blood with Anti-CD61 Antibody [VIPL2] (PE-Cyanine 7).