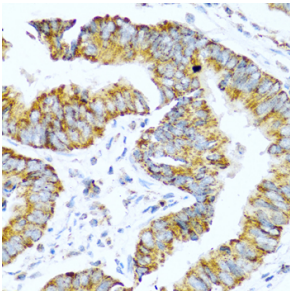


Anti-Glucagon Antibody (A13251)

Specifications:

Name:	Anti-Glucagon Antibody
Description:	Rabbit polyclonal antibody to Glucagon.
Applications:	IHC, ICC/IF
Recommended Dilutions:	IHC: 1:100-1:200, ICC/IF: 1:100-1:200
Reactivity:	Human, Mouse, Rat
Immunogen:	Recombinant fusion protein containing a sequence corresponding to amino acids 21-180 of human Pro-glucagon (NP_002045.1).
Sequence:	RSLQDTEEKSRFSASQADPLSDPDQMNEKDRHSQGTFTSDYSKYLDSRRAQDFVQWL MNTKRNRRNNAKRHDEFERHAEGTFTSDVSSYLEGQAAKEFIAWLVKGRRRDFPEEV AIVEELGRRHADGFSFDEMNTILDNLAARDFINWLIQTKITDRK
Host:	Rabbit
Clonality:	Polyclonal
Isotype:	IgG
Conjugate:	Unconjugated
Purification:	Affinity purification.
Product Form:	Liquid
Formulation:	Supplied in Phosphate Buffered Saline, pH 7.3, with 50% Glycerol and 0.02% Sodium Azide.
Storage:	Shipped at 4°C. Upon delivery aliquot and store at -20°C. Avoid freeze / thaw cycles.
Disclaimer:	This product is for research use only. It is not intended for diagnostic or therapeutic use.

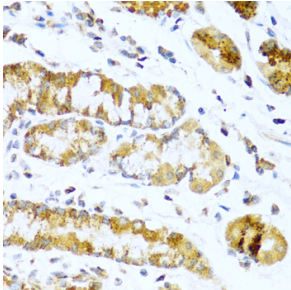
Images:



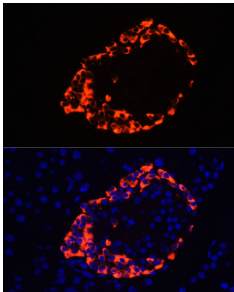
Immunohistochemistry analysis of paraffin-embedded human colon carcinoma tissue using Anti-Glucagon Antibody (A13251) at a dilution of 1:100 (40x lens). Perform microwave antigen retrieval with 10 mM PBS buffer pH 7.2 before commencing with IHC staining protocol.

Anti-Glucagon Antibody (A13251)

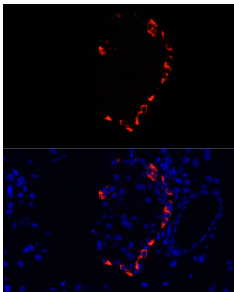
Images continued:



Immunohistochemistry analysis of paraffin-embedded human stomach using Anti-Glucagon Antibody (A13251) at a dilution of 1:100 (40x lens). Perform microwave antigen retrieval with 10 mM PBS buffer pH 7.2 before commencing with IHC staining protocol.



Immunofluorescence analysis of rat pancreas cells using Anti-Glucagon Antibody (A13251) at a dilution of 1:100. DAPI was used to stain the cell nuclei (blue).



Immunofluorescence analysis of mouse pancreas cells using Anti-Glucagon Antibody (A13251) at a dilution of 1:100. DAPI was used to stain the cell nuclei (blue).